

TECHNICAL MANUAL

DIRECT SUPPORT AND GENERAL SUPPORT

REPAIR PARTS AND SPECIAL TOOLS LIST

FOR

T R A N S M I S S I O N S

(2520-00-347-4520) (2520-00-884-4833)

T R A N S F E R S

(2520-00-089-8287) (2520-00-001-7855)

P O W E R T A K E - O F F

(2520-00-229-5673) (2520-00-706-1136)

(2520-00-706-1137)

HEADQUARTERS, DEPARTMENT OF THE ARMY

MAY 1976

Technical Manual }
TM 9-2520-246-34P }

HEADQUARTERS
DEPARTMENT OF THE ARMY
WASHINGTON, DC, 28 May 1976

**DIRECT SUPPORT AND GENERAL SUPPORT
REPAIR PARTS AND SPECIAL TOOLS LIST
FOR**

TRANSMISSIONS

(2520-00-347-4520) (2520-00-884-4833)

TRANSFERS

(2520-00-089-8287) (2520-00-001-7855)

POWER TAKE-OFF.

(2520-00-229-5673)(2520-00-706-1136)

(2520-00-706-1137)

Current as of 30 October 1975

		Illus Figure	Page
Section	I. Introduction		3
	II. Repair Parts List		7
Group	07. Transmission.		7
	0700 Transmission assembly	1,2	7
	0701 Transmission input and output shafts, countershafts, and idler shafts with gears	3	8
	0704 Transmission top cover assembly	4,5	9
	08. Transfer		10
	0601 Power transfer	6-10	10
	12. Brakes		14
	1201 Parking brake drum and shoes, and related parts	11	14
	20. Power Take-Off		16
	2004 Power take-off assembly	12-15	16
Section	III. Special Tools List		21
Group	26. Tools and test equipment		21
	2604 Special tools	16	21
Section	IV. National Stock Number and Part Number Index		39

— This manual supersedes TM9-2520-246-35P, 11 July 1962, including all changes.

SECTION I

INTRODUCTION

1. Scope

This manual lists repair parts with special tools authorized for direct support and general support of: Transmission Assemblies, 2520-00-347-4520 and 2520-00-884-4833; Transfer Assemblies, 2520-00-001-7855, 2520-00-089-8287 and Power Take-Off Assemblies, 2520-00-229-5673, 2520-00-706-1136, 2520-00-706-1137.

2. General

This Repair Parts and Special Tools List is divided into the following sections:

a. *Section II- Repair Parts List.* A list of repair parts authorized for use in the performance of maintenance. The list also includes parts which must be removed for replacement of the authorized parts. Parts lists are composed for functional groups in ascending numerical sequence, with the parts in each group listed in figure and item number sequence. Bulk materials are listed in NSN sequence.

b. *Section III-Special Tools List.* A list of special tools, TMDE, end support equipment authorized for the performance of maintenance at the organizational level.

c. *Section IV-National Stock Number and Part Number Index.* A list, in ascending numerical sequence, of all National stock numbers appearing in the listings, followed by a list, in alphanumeric sequence, of all part numbers appearing in the listings. Federal stock number and part numbers are cross-referenced to each illustration figure and item number appearance. This index is followed by a cross-reference list of reference designations to figure and item numbers when applicable.

3. Explanation of Columns

The following provides an explanation of columns found in the tabular listings:

a. *Illustration.* This column is divided as follows:

(1) *Figure number.* Indicates the figure number of the illustration in which the item is shown.

(2) *Item number.* The number used to identify each item called out in the illustration.

b. *Source, Maintenance, and Recoverability Codes (SMR).*

(1) *Source code.* Source codes are assigned to support items to indicate the manner of acquiring support items for maintenance, repair, or overhaul of end items. Source codes are entered in the first and second positions of the Uniform SMR Code format as follows:

Code	Definition
PA	Item procured and stocked for anticipated or known usage.
PB	Item procured and stocked for insurance purpose because essentiality dictates that minimum quantity be available in the supply systems.
PC	Item procured and stocked and which otherwise would be coded PA except that it is deteriorative in nature.
PD	Support item, excluding support equipment, procured for initial issue or outfitting and stocked only for subsequent or additional initial issues or outfittings. Not subject to automatic replenishment.
PE	Support equipment procured and stocked for initial issue or outfitting to specified maintenance repair activities.
PF	Support equipment which will not be stocked but which will be centrally procured on demand.
PC	Item procured and stocked to provide for sustained support for the life of the equipment. It is applied to an item peculiar to the equipment which, because of probable discontinuance or shutdown of production facilities, would prove uneconomical to reproduce at a later time.
KD	An item of a depot overhaul/repair kit and not purchased separately. Depot kit defined as a kit that provides items required at the time of overhaul or repair.
KF	An item of a maintenance kit and not purchased separately. Maintenance kit defined as a kit that provides an item that can be replaced at organizational or intermediate levels of maintenance.
KB	Item included in both a depot overhaul/repair kit and a maintenance kit.
MO	Item to be manufactured or fabricated at organizational level.
MF	Item to be manufactured or fabricated at the direct support maintenance level.
MH	Item to be manufactured or fabricated at the general support maintenance level.
MD	Item to be manufactured or fabricated at the depot maintenance level.
AO	Item to be assembled at organizational level.
AF	Item to be assembled at direct support maintenance level.
AH	Item to be assembled at general support maintenance level.
AD	Item to be assembled at depot maintenance level.
XA	Item is not procured or stocked because the requirements for the item will result in the replacement of the next higher assembly.
XB	Item is not procured or stocked. If not available through salvage, requisition.
XD	A support item that is not stocked. When required, item will be procured through normal supply channels.

NOTE

Cannibalization or salvage may be used as a source of supply for any items source coded above except those coded XA, XD, and aircraft support items as restricted by AR 700-42.

(2) *Maintenance code.* Maintenance codes are gned to indicate the levels of maintenance **horized** to USE and REPAIR support items. The ntenance codes are entered in the third and th positions of the Uniform SMR Code format as ows:

(a) The maintenance code entered in the d position will indicate the lowest maintenance d authorized to remove, replace, and use the port item. The maintenance code entered in the d position will indicate one of the following levels maintenance:

Application/Explanation

- Crew or operator** maintenance performed within organizational maintenance.
- Support item is removed, replaced, used at the organizational level.**
- Support item is removed, replaced, used by the direct support element of integrated direct support maintenance.**
- Support item is removed, replaced used at the direct support level.**
- Support item is removed, replaced, used at the general support level.**
- Support items that are removed, replaced, used at depot, mobile depot, specialized repair activity only.**

NOTE

Codes "I" and "F" will be considered the same by direct support units.

(b) The maintenance code entered in the th position indicates whether the item is to be iired and identifies the lowest maintenance level 1 the capability to perform complete repair (i. e., mthorized maintenance functions). This position contain one of the following maintenance codes:

Application/Explanation

- The lowest maintenance level capable of complete repair of the support item is the organizational level.**
- The lowest maintenance level capable of complete repair of the support item is the direct support level.**
- The lowest maintenance level capable of complete repair of the support item is the general support level.**
- The lowest maintenance level capable of complete repair of the support item is the depot level, performed by depot, mobile depot or specialized repair activity.**
- Repair restricted to designated specialized repair activity.**
- Nonreparable. No repair is authorized.**
- No repair is authorized. The item may be reconditioned by adjusting, lubricating, etc., at the user level. No parts or special tools are procured for the maintenance of this item.**

(3) *Recoverability code.* Recoverability codes

are assigned to support items to indicate the disposition action on unserviceable items. The recoverability code is entered in the fifth position of the Uniform SFR Code format as follows:

Recoverability code	Definition
Z	Nonreparable item. When unserviceable, condemn and dispose at the level indicated in position 3.
O	Reparable item. When uneconomically repairable, condemn and dispose at organizational level.
F	Reparable item. When uneconomically repairable, condemn and dispose at the direct support level.
H	Reparable item. When uneconomically repairable, condemn and dispose at the general support level.
D	Reparable item. When beyond lower level repair capability, return to depot. Condemnation and disposal not authorized below depot level.
L	Reparable item. Repair, condemnation, and disposal not authorized below depot/specialized repair activity level.
A	Item requires special handling or condemnation procedures because of specific reasons (i.e., precious metal content, high dollar value, critical material or hazardous material). Refer to appropriate manuals/directives for specific instructions.

c. *National Stock Number.* Indicates the National stock number assigned to the item and will be used for requisitioning purposes.

d. *Part Number.* Indicates the primary number used by the manufacturer (individual, company, firm, corporation, or Government activity), which controls the design and characteristics of the item by means of its engineering drawings, specifications standards, and inspection requirements, to identify an item or range of items.

NOTE

When a stock numbered item is requisitioned, the repair part received may have a different part number than the part being replaced.

e. *Federal Supply Code for Manufacturer (FSCM).* The FSCM is a 5-digit numeric code listed in SB708-42 which is used to identify the manufacturer, distributor, or Government agency, etc.

f. *Unit of Measure (U/M).* Indicates the standard of the basic quantity of the listed item as used in performing the actual maintenance function. This measure is expressed by a two-character alphabetical abbreviation (e.g., ea, in, pr, etc). When the unit of measure differs from the unit of issue, the lowest unit of issue that will satisfy the required units of measure will be requisitioned.

g. *Quantity Furnished with Equipment.* (Basic Issue Items Only). Indicates the quantity of the basic issue item furnished with the equipment.

h. *Quantity Authorized.* (Items Troop Installed or Authorized Only). Indicates the quantity of the item authorized to be used with the equipment.

i. *Quantity Incorporated in Unit.* Indicates the

quantity of the item used in the breakout shown on the illustration figure, which is prepared for a functional group, subfunctional group, or an assembly. A "V" appearing in this column in lieu of a quantity indicates that no specific quantity is applicable, (e.g., shims, spacers, etc.).

4. Special Information

a Components contained in this manual are applicable to the Truck, Cargo: 2 1/2 Ton, 6x6, M44 Series (TM9-2320-209).

<i>Component</i>	<i>End item</i>		
Transmission (2520-00-347-4520)	M44 Series (gasoline)		
Transmission (2520-00-884-4833)	M44 Series (multifuel)		
Transfer (2520-00-089-8287)	M352A	M45A2G	M29A2
	M35A2C	M46A2	M342A2
	M36A2	M46A2C	M621
	M36A2C	M109A3	M622
	M44A2	M185A3	M623
	M45A2	M275A2	M624
Transfer (2520-00-001-7855)	M44		
Power Take-Off (2520-00-229-5673)	M621	M623	
	M622	M624	
Power Take-Off (2520-00-706-1136)	M47	M58	M59
	M57	M58A1	M352
Power Take-Off (2520-00-706-1137)	M34	M46	M108
	M35	M46A1	M109
	M35A1	M46C	M109A1
	M35A2	M48	M109A2
	M36A2	M49	M109A3
	M36C	M49A1C	M109C
	M44	M49A2C	M109D
	M44A1	M49C	M275
	M44A2	M50	M275A1
	M45	M50A1	M275A2
	M45A1	M50A2	VT17-A/MTQ
	M45A2	M60	VT18-A/MTQ

b. Usable on codes are shown in the description column. Uncoded items are applicable to all models. Identification of the usable on codes used in this publication are:

<i>Code</i>	<i>Used on</i>
A	Transmission (2520-00-347-4520) — Gasoline Engine
B	Transmission (2520-00-884-4833) — Multifuel Engine
C	Power Take-off (2520-00-706-1136) — Front and Rear Output Shafts
D	Power Take-off (2520-00-706-1137) — Front Output Shaft only
E	Transfer (2520-00-001-7855) — Spring type (w/improved oiling)
F	Transfer (2520-00-089-8287) — Air lock-up
H	Power Take-off (2520-00-229-5673) —

c. Detailed manufacturing instructions for items source coded to be manufactured or fabricated are found in TM9-2815-246-35.

d. Detailed assembly instructions for items source coded to be assembled are found in TM 9-2815-246-35.

e. Repair parts kits and gasket set appear as the last entries in the repair parts listing for the figure in which its parts are listed as repair parts. Kits or Sets whose separate components appear as repair parts in more than one figure will be found immediately

following the repair parts listing for the last figure containing parts of the Kit.

f. The following publication pertains to transmission, transfers and power take-offs installed on M44 series vehicles.

<i>Publication No.</i>	<i>Title</i>
TM 9-2520-246-35	Direct Support, General Support and Depot Maintenance for Transmissions, Transfers and Power Take-offs.

5. How to Locate Repair Parts

a. When National Stock Number or Part Number is Unknown:

(1) *First.* Using the table of contents, determine the functional subgroup within which the repair part belongs. This is necessary since illustrations are prepared for subgroups, and listings are divided into the same group.

(2) *Second.* Find the illustration covering the functional subgroup to which the repair part belongs.

(3) *Third.* Identify the repair part on the illustration and note the illustration figure and item number of the repair part.

(4) Fourth. Using the Repair Parts Listing, the figure and item number noted on the illustration.

When National Stock Number or Part Number **known:**

(1) *First.* Using the Index of National Stock Numbers and Part Numbers, find the pertinent National Stock Number or part number. This index ascending NSN sequence followed by a list of numbers in ascending alphanumeric sequence, s-referenced to the illustration figure number item number.

(2) *Second.* After finding the figure and item number, locate the figure and item number in the repair parts list.

6. Reporting of Errors

You can improve this manual by recommending improvements. Mail your comments direct to Commander, US Army Tank-Automotive Command, ATTN: DRSTA-MTP, Warren, MI 48090, using DA Form 2028, (Recommended Changes to Publications and Blank Forms). A reply will be sent direct to you.

SECTION II

REPAIR PARTS LIST

(1)	(2)	(3)	(4)	(5)	(6)	(7)	(8)
ILLUSTRATION							QTY
(a) (b)	SMR	NATIONAL	PART	FSCM	DESCRIPTION	U/M	INC
FIG. ITEM	CODE	STOCK	NUMBER				IN
NO. NO.		NUMBER			USABLE ON CODE		UNIT
GROUP 07-TRANSMISSION							
0700-TRANSMISSION ASSEMBLY							
1	1	PAFZZ	5305-00-317-3102	594119	21450	SCREW, ASSEMBLED LOCKWASHER: TRANSMISSION ASSEMBLY	EA 12
1	2	PAOZZ	4820-00-726-4719	5196397	19207	VALVE, AIR PRESSURE, ASSEMBLY: TRANSMISSION ASSEMBLY	EA 1
1	3	PAFHH	2520-00-347-4520	7520995	19207	TRANSMISSION, MECHANICAL: ASSEMBLY (GAS) A	EA 1
1	3	PAFHH	2520-00-884-4833	10872096	19207	TRANSMISSION, MECHANICAL: ASSEMBLY (SPICER MODEL 3052 (MULTIFUEL) B	EA 1
2	1	PAFZZ	3110-00-198-1502	2135-1	08162	BEARING, BALL, THRUST: RELEASE, TRANSMISSION CLUTCH HOUSING	EA 1
2	2	PAFZZ	2520-00-752-0966	7520966	19207	CARRIER: RELEASE BEARING, TRANSMISSION CLUTCH HOUSING	EA 1
2	3	PAFZZ	5306-00-174-4202	5214807	19207	BOLT, MACHINE: RELEASE FORK, TRANSMISSION CLUTCH HOUSING	EA 2
2	4	PAFZZ	5310-00-209-0965	MS35338-47	96906	WASHER, LOCK: RELEASE FORK TRANSMISSION CLUTCH HOUSING	EA 2
2	5	PAFZZ	5310-00-661-9568	5226033	19207	WASHER, THRUST: KEY RELEASE FORK, TRANSMISSION CLUTCH HOUSING	EA 2
2	6	PAFZZ	2520-00-752-0967	7520967	19207	FORK, RELEASE: TRANSMISSION CLUTCH HOUSING	EA 1
2	7	PAFZZ	5330-00-752-0959	7520959	19207	GASKET: CLUTCH HOUSING MOUNTING	EA 1
2	8	PAFZZ	5340-00-752-0976	7520976	19207	PLUG, EXPANSION: SHAFT HOLE, THROW-OUT LEVER	EA 1
2	9	PAFZZ	2520-00-752-0952	7520952	19207	HOUSING, CLUTCH	EA 1
2	10	PAOZZ	4730-00-172-0034	MS15003-7	19207	FITTING, LUBRICATION: CLUTCH HOUSING	EA 1
2	11	PAFZZ	5330-00-286-6815	500021	19207	SEAL, PLAIN, ENCASED: CLUTCH HOUSING	EA 1
2	12	PAOZZ	5306-00-044-5319	8712073	19207	BOLT, SPECIAL: TRANSMISSION CASE INPUT SHAFT BEARING COVER (4) INSPECTION HOLE COVER (6)	EA 10
2	13	PAHZZ	2520-00-508-4664	7520989	19207	COVER, TRANSFER INPUT SHAFT BEARING FRONT	EA 1
2	14	PAHZZ	5330-00-594-8953	7520992	19207	GASKET: INPUT SHAFT BEARING (PART OF SET 2520-00-752-0987)	EA 1
2	15	PAFZZ	5330-00-752-0958	7520958	19207	GASKET: CLUTCH HOUSING (PART OF SET 2520-00-752-0987)	EA 1
2	16	XAHZZ		7520988	19207	CASE: TRANSMISSION HOUSING	EA 1
2	17	PAFZZ	5330-00-752-1061	7521061		GASKET: TRANSMISSION (PART OF SET 2520-00-752-0987)	
2	18	KFHZZ		7521004	19207	GASKET: BEARING RETAINER (PART OF SET 2520-00-752-0987)	
2	19	PAHZZ	2520-00-692-6065	7521007	19207	RETAINER WITH OIL SEAL: REAR BEARING	EA 1
2	20	XAHZZ		7748571	19207	CAP: RETAINER TO TRANSMISSION CASE, MAIN SHAFT REAR BEARING	EA 1
2	21	PAHZZ	5330-00-350-9958	583509	21450	SEAL, PLAIN, ENCASED: REAR BEARING MAIN SHAFT	EA 1
2	22	PAHZZ	5306-00-021-4077	8743049	19207	SCREW, ASSEMBLED W/LOCKWASHER: BEARING COVER, REAR MAINSHAFT (6), COUNTERSHAFT (4), POWER TAKE-OFF ACCESS COVER (6)	EA 16

(1)	(2)	(3)	(4)	(5)	(6)	(7)	(8)
ILLUSTRATION							QTY.
(a) (b)	SMR	NATIONAL	PART	FSCM	DESCRIPTION	U/M	INC.
FIG. ITEM	CODE	STOCK	NUMBER				IN
NO. NO.		NUMBER			USABLE ON CODE		UNIT
					0700-TRANSMISSION ASSEMBLY-CONTINUED		
2	23	PAHZZ 2520-00-692-6070	7521038	19207	COVER:TRANSFER,COUNTERSHAFT REAR BEARING	EA	1
2	24	PAOZZ 4730-00-278-3380	MS49005-10	96906	PLUG,PIPE:OIL FILLER AND DRAIN	EA	2
2	25	PAHZZ 2520-00-752-1039	7521039	19207	GASKET:COUNTERSHAFT REAR BEARING COVER(PART OF SET 2520-00-752-0987)		
2	26	PAHZZ 5330-00-234-3317	8327322	19207	GASKET:ACCESS HOLE,POWER TAKE-OFF (PART OF SET 5330-00-752-0987)	EA	1
2	27	PAHZZ 2520-00-354-0771	5323473	19207	COVER:ACCESS,TRANSMISSION CASE,POWER TAKE-OFF	EA	1
2	28	PAHZZ 2520-00-752-1032	7521032	19207	RETAINER:COUNTERSHAFT FRONT BEARING	EA	1
2	29	PAFZZ 2520-00-752-0979	7520979	19207	SHAFT:CLUTCH THROW-OUT LEVER	EA	1
2	30	PAOZZ 5330-00-752-0957	7520957	19207	GASKET:INSPECTION HOLE COVER(PART OF SET 5330-00-752-0987)	EA	1
2	31	PAOZZ 2520-00-752-0956	7520956	19207	COVER PLATE:INSPECTION HOLE ACCESS	EA	1
2	32	PAFZZ 5310-00-584-5272	MS35338-48	96906	WASHER,LOCK:CLUTCH HOUSING	EA	5
2	33	PAFZZ 5305-00-716-8184	MS90726-112	96906	SCREW,CAP,HEXAGON HEAD:CLUTCH HOUSING	EA	5
2	34	PAFZZ 5340-00-392-4017	7520980	19207	SPRING:CLUTCH RELEASE BEARING CARRIER	EA	2
2	35	PAFZZ 2520-00-752-0965	7520965	19207	BUTTON:CLUTCH RELEASE BEARING CARRIER	EA	2
2	36	PAOZZ 4730-00-050-4208	MS15003-1	96906	FITTING:LUBRICATION:CLUTCH RELEASE BEARING CARRIER	EA	1
		PAHZZ 2520-00-752-0987	7520987	19207	GASKET SET:TRANSMISSION ASSEMBLY	EA	1
2	14				GASKET:INPUT SHAFT BEARING COVER	EA	1
2	15				GASKET:CLUTCH HOUSING	EA	1
2	17				GASKET:TRANSMISSION CASE	EA	1
2	18				GASKET:BEARING RETAINER	EA	1
2	25				GASKET:COUNTERSHAFT REAR BEARING COVER	EA	1
2	26				GASKET:ACCESS HOLE,POWER TAKE-OFF	EA	1
2	30				GASKET:INSPECTION HOLE COVER	EA	1
					0701-TRANSMISSION INPUT AND OUTPUT SHAFTS, COUNTERSHAFTS AND IDLER SHAFTS WITH GEARS		
3	1	PAHZZ 5365-00-508-4675	7520993	19207	RING,RETAINING:SNAP,INPUT SHAFT BEARING	EA	1
3	2	PAHZZ 3110-00-554-5960	700955	21450	BEARING,BALL,ANNULAR,INPUT SHAFT,FRONT	EA	1
3	3	PAHZZ 2520-00-752-0994	7520994	19207	SHAFT:INPUT WITH INTEGRAL GEAR(GAS) A	EA	1
3	3	PAHZZ 2520-00-885-3423	10914635	19207	SHAFT:INPUT,WITH INTEGRAL GEAR(MULTIFUEL) B	EA	1
3	4	PAHZZ 3110-00-227-4123	7521010	19207	ROLLER BEARING:INPUT SHAFT	EA	14
3	5	PAHZZ 2520-00-752-1022	7521022	19207	SYNCHRONIZER,TRANSMISSION:FOURTH AND FIFTH SPEEDS	EA	1
3	6	PAHZZ 5365-00-699-8456	7521008	19207	RING,RETAINING:SNAP FOURTH SPEED GEAR	EA	1
3	7	PAHZZ 5310-00-285-2169	7521024	19207	WASHER,KEYWAY:INPUT SHAFT	EA	1
3	8	PAHZZ 3020-00-752-1015	7521015	19207	GEAR,HELICAL:FOURTH SPEED (GAS) A	EA	1
3	8	PAHZZ 4730-00-884-4838	10914637	19207	GEAR,HELICAL:MAINSHAFT,FOURTH SPEED (MULTIFUEL) B	EA	1
3	9	PAHZZ 5315-00-699-8458	7521018	19207	PIN:STRAIGHT HEADED,FOURTH SPEED GEAR(SLEEVE)	EA	1
3	10	PAHZZ 3120-00-752-1020	7521020	19207	BEARING,SLEEVE:FOURTH SPEED GEAR	EA	1
3	11	PAHZZ 3020-00-752-1016	7521016	19207	GEAR,HELICAL:THIRD SPEED	EA	1
3	12	PAHZZ 2520-00-752-1023	7521023	19207	SYNCHRONIZER,TRANSMISSION:SECOND AND THIRD SPEED	EA	1
3	13	PAHZZ 5365-00-699-8457	7521009	19207	RING:RETAINING:CLUTCH GEAR	EA	1
3	14	PAHZZ 3020-00-752-1005	7521005	19207	GEAR:CLUTCH,SECOND AND THIRD SPEED	EA	1

(1)	(2)	(3)	(4)	(5)	(6)	(7)	(8)
ILLUSTRATION							QTY.
(a)	(b)	SMR	NATIONAL	PART	FSCM	DESCRIPTION	U/M
FIG.	ITEM	CODE	STOCK	NUMBER			INC.
NO.	NO.		NUMBER			USABLE ON CODE	IN
							UNIT
						0701-TRANSMISSION INPUT AND OUTPUT SHAFTS, COUNTERSHAFTS AND IDLER SHAFTS WITH GEARS-CONTINUED	
3	15	PAHZZ	3020-00-752-1017	7521017	19207	GEAR,HELICAL:SECOND SPEED	EA 1
3	16	PAHZZ	5315-00-012-4553	MS35756-17	96906	KEY,WOODRUFF:SYNCHRONIZER SLEEVE	EA 2
3	17	PAHZZ	2520-00-752-1019	7521019	19207	SHAFT:MAIN	EA 1
3	18	PAHZZ	3020-00-752-1006	7521006	19207	GEAR,SPUR:FIRST SPEED AND REVERSE	EA 1
3	19	PAHZZ	3110-00-155-6706	700772	00000	BEARING,BALL,ANNULAR:REAR,MAIN SHAFT	EA 1
3	20	PAHZZ	5365-00-752-1021	7521021	19207	SPACER,SLEEVE:REAR BEARING,MAIN SHAFT	EA 1
3	21	PAHZZ	5315-00-298-1481	MS24665-357	96906	PIN,COTTER:SLOTTED NUT	EA 2
3	22	PAHZZ	5310-00-529-4103	5294103	19207	NUT,PLAIN,SLOTTED:MAIN SHAFT(1),COUNTER(1)	EA 2
3	23	PAHZZ	2520-00-752-1003	7521003	19207	FLANGE,COMPANION,UNION:MAIN SHAFT	EA 1
3	24	PAHZZ	3020-00-752-1031	7521031	19207	GEAR,HELICAL:COUNTERSHAFT DRIVE (GAS) A	EA 1
3	24	PAHZZ	2520-00-884-4835	10914636		GEAR,HELICAL:COUNTERSHAFT DRIVE(MULTIFUEL) B	EA 1
3	25	PAHZZ	5365-00-752-1046	7521046	19207	RING:RETAINING:DRIVE GEAR(1)FOURTH SPEED GEAR(1)	EA 2
3	26	PAHZZ	3020-00-752-1029	7521029	19207	GEAR,HELICAL:COUNTERSHAFT FOURTH SPEED (GAS) A	EA 1
3	26	PAHZZ	2520-00-884-4832	10914638	19207	GEAR,HELICAL:COUNTERSHAFT FOURTH SPEED (MULTIFUEL) B	EA 1
3	27	PAHZZ	5315-00-058-8583	MS35756-110	96906	KEY,WOODRUFF:GEAR RETAINING,HELICAL DRIVE AND FOURTH SPEED COUNTERSHAFT	EA 2
3	28	PAHZZ	2520-00-752-1037	7521037	19207	COUNTERSHAFT:WITH INTEGRAL GEARS	EA 1
3	29	PAHZZ	3110-00-155-6686	700771	21450	BEARING,BALL,ANNULAR:COUNTERSHAFT REAR	EA 1
3	30	PAHZZ	5310-00-752-1036	7521036	19207	WASHER,FLAT:COUNTERSHAFT NUT	EA 1
3	31	PAHZZ	2520-00-752-1047	7521047	19207	SHAFT:REVERSE IDLER GEAR	EA 1
3	32	PAHZZ	3120-00-752-1049	7521049	19207	WASHER,THRUST:REVERSE IDLER GEAR	EA 1
3	33	PAHZZ	3110-00-120-4276	708231	00000	ROLLER ASSEMBLY:BEARING,IDLER GEAR	EA 2
3	34	PAHZZ	3020-00-752-1030	7521030	19207	GEAR CLUSTER:HELICAL:REVERSE IDLER	EA 1
3	35	PAHZZ	5365-00-752-1045	7521048	19207	RING,RETAINING:DRIVE GEAR,COUNTERSHAFT	EA 1
3	36	PAHZZ	5310-00-752-1048	7521048	19207	WASHER,FLAT:FRONT BEARING,COUNTERSHAFT	EA 1
3	37	PAHZZ	3110-00-117-0693	707617	00000	BEARING,ROLLER CYLINDRICAL:COUNTERSHAFT,FRONT	EA 1
						0704-TRANSMISSION TOP COVER ASSEMBLY	
4	1	PAFZZ	2520-00-347-4591	7521056	19207	COVER ASSEMBLY:GEAR SHIFT:TRANSMISSION	EA 1
4	2	PAOZZ	5355-00-962-3018	6184279	19207	KNOB;GEAR SHIFT HAND LEVER	EA 1
4	3	PAOZZ	2520-00-692-6072	7521062	19207	BOOT,DUST AND MOISTURE:GEAR SHIFT HAND LEVER	EA 1
4	4	PAFZZ	2520-00-930-3138	10937790	19207	LEVER:HAND GEAR SHIFT	EA 1
4	5	PAFZZ	5310-00-209-0965	MS35338-47	96906	WASHER,LOCK:HAND LEVER CLAMP	EA 1
4	6	PAFZZ	5310-00-880-7745	MS51968-11	96906	NUT,PLAIN HEXAGON,HEAD LEVER CLAMP	EA 1
4	7	PAFZZ	5310-00-692-6101	7539146	19207	PIN,STRAIGHT HEADED,PIVOT,GEAR SHAFT	EA 2
4	8	PAFZZ	2520-00-627-5978	7529023	19207	COVER:TRANSMISSION	EA 1
4	9	PAFZZ	5330-00-752-7750	MS35769-4	96906	GASKET:SHIFTER SHAFT,INTERLOCK ATTACHMENT	EA 4
4	10	PAFZZ	5310-00-984-3807	MS51922-13	96906	NUT:SHIFTER SHAFT ATTACHING	EA 2
4	11	PAFZZ	5306-00-021-4077	8743049	19207	SCREW,ASSEMBLED LOCKWASHER:TRANSMISSION COVER	EA 8
4	12	PAFZZ	5330-00-454-0338	MS51915-21-1	96906	SEAL,PLAIN ENCASED:SHIFTER SHAFT	EA 1

(1)	(2)	(3)	(4)	(5)	(6)	(7)	(8)	
ILLUSTRATION							QTY.	
(a) FIG. NO.	(b) ITEM NO.	SMR CODE	NATIONAL STOCK NUMBER	PART NUMBER	FSCM	DESCRIPTION	U/M	INC. IN UNIT
						USABLE ON CODE		
0704-TRANSMISSION TOP COVER ASSEMBLY-CONTINUED								
4	13	PAFZZ	2520-00-752-1094	7521094	19207	BRACKET,SHIFTER SHAFT:REVERSE GEAR	EA	1
4	14	PAFZZ	5305-00-752-1058	7521058	19207	SCREW:LOCK,SHIFTER FORK	EA	4
4	15	PAFZZ	2520-00-752-1060	7521060	19207	FORK:SHIFTER,REVERSE GEAR	EA	1
4	16	PAFZZ	2520-00-752-1097	7521097	19207	SHAFT,STRAIGHT:REVERSE GEAR SHIFTER	EA	1
4	17	PAFZZ	9605-00-248-9850	MS20995F47	96906	LOCKWIRE:SETSCREW,SHIFTER FORK	EA	V
4	18	PAFZZ	5360-00-347-4563	7521100	19207	SPRING,HELICAL,COMPRESSION:SHIFTER SHAFT DETENT BALL	EA	3
4	19	PAFZZ	3110-00-142-6040	MS19061-11	96906	BALL,BEARING:SHIFTER SHAFT DETENTS	EA	3
4	20	PAFZZ	2520-00-752-1093	7521093	19207	LEVER:HAND GEAR SHIFT EXTENSION	EA	1
4	21	PAFZZ	2520-00-752-1096	7521096	19207	SEAT,HELICAL,COMPRESSION:GEAR SHIFT LEVER SUPPORT SPRING	EA	1
4	22	PAFZZ	5360-00-692-6075	7521102	19207	SPRING,HELICAL,COMPRESSION:SUPPORT SHIFTER LEVER	EA	1
4	23	PAFZZ	5365-00-699-8459	7521095	19207	RING,RETAINING:SHIFT LEVER SUPPORT SPRING	EA	1
4	24	PAFZZ	2520-00-933-3112	10937974	19207	PLATE,INTERLOCK:SHIFTER SHAFT	EA	1
4	25	PAFZZ	5360-00-692-6074	7521101	19207	SPRING,HELICAL,COMPRESSION:SHIFTER SHAFT INTERLOCK	EA	2
4	26	PAFZZ	5310-00-167-0820	48488	62983	WASHER,FLAT:SHIFTER SHAFT INTERLOCK	EA	2
4	27	PAFZZ	5340-00-050-1593	MS35648-5	96906	PLUG,EXPANSION:SHIFTER SHAFT	EA	3
4	28	PAFZZ	2520-00-752-1099	7521099	19207	SHAFT,SHIFTER:SECOND,THIRD,FOURTH AND FIFTH SPEED GEARS	EA	2
4	29	PAFZZ	2520-00-752-1057	7521057	19207	FORK,SHIFTER:FOURTH AND FIFTH GEARS	EA	1
4	30	PAFZZ	2520-00-752-1059	7521059	19207	FORK,SHIFTER:SECOND AND THIRD GEARS	EA	1
4	31	PAFZZ	5306-00-752-1055	7521055	19207	BOLT,SHOULDER:TOP COVER ASSEMBLY	EA	2
4	32	PAFZZ	5305-00-710-4195	MS90726-90	96906	SCREW:SHIFT LEVER CLAMP	EA	1
GROUP 0800-TRANSFER								
0801-POWER TRANSFER								
5	1	PAFZZ	5310-00-241-6664	MS51943-44	96906	NUT,SELF-LOCKING,HEXAGON;SUPPORT STUD, TRANSFER ASSEMBLY	EA	10
5	2	PAFZZ	5307-00-695-7213	8331791	19207	STUD,PLAIN:SUPPORT,TRANSFER ASSEMBLY	EA	10
5	3	PAFHH	2520-00-001-7855	11609226	19207	TRANSFER,TRANSMISSION;ASSEMBLY WITH FLANGE E (ROCKWELL-STANDARD MODEL T-136-21)	EA	1
5	4	PAFHH	2520-00-089-8287	11609224	19207	TRANSFER,TRANSMISSION;ASSEMBLY WITH FLANGE F (W-AIR SHIFT) (ROCKWELL STANDARD MODEL,T-136-27)		
6	1	XAHZZ		7521363-1	19207	CASE WITH COVER ASSEMBLY:TRANSFER TRANSMISSION	EA	1
6	2	PAFZZ	5305-00-071-1788	MS90728-87	96906	SCREW,CAP,HEXAGON HEAD:REAR BEARING RETAINER, OUTPUT SHAFT	EA	6
6	3	PAHZZ	5310-00-209-0965	MS35338-47	96906	WASHER,LOCK:TRANSFER CASE FRONT COVER(39), TOP COVER(4),BEARING RETAINER CAP(6), BEARING COVER(6)	EA	55
6	4	PAHZZ	5305-00-071-2056	MS90728-90	96906	SCREW,CAP,HEXAGON HEAD:BEARING COVER E COUNTERSHAFT	EA	4

(1)	(2)	(3)	(4)	(5)	(6)	(7)	(8)	
ILLUSTRATION								
(a)	(b)	SMR	NATIONAL	PART	FSCM	DESCRIPTION	U/M	QTY.
FIG.	ITEM	CODE	STOCK	NUMBER				INC.
NO.	NO.		NUMBER			USABLE ON CODE		IN
								UNIT
						0801-POWER TRANSFER-CONTINUED		
6	5	PAHZZ	5305-00-165-8250	11609328-1	19207	SCREW,CAP,HEXAGON HEAD:BEARING COVER, COUNTERSHAFT	EA	1
6	6	PAHZZ	5305-00-071-2055	MS90728-89	96906	SCREW,CAP,HEXAGON HEAD;BEARING COVER, COUNTERSHAFT	EA	2
6	7	PAHZZ	2520-00-752-1439	7521439	19207	COVER,ACCESS:REAR BEARING,COUNTERSHAFT	EA	1
6	8	PAHZZ	2520-00-752-1441	7521441	19207	SHIM:REAR BEARING COVER (PART OF SET 5330-00-752-1437)	EA	1
6	9	PAHZZ	2520-00-752-1446	7521446	19207	SHIM:REAR BEARING COVER PART OF SET 5330-00-752-1437)	EA	1
6	10	PAHZZ	5305-00-071-1785	MS90728-84	96906	SCREW,CAP,HEXAGON HEAD:COVER BEARING,INPUT SHAFT	EA	6
6	11	PAHZZ	2520-00-752-1585	7521585	19207	COVER:REAR BEARING,INPUT SHAFT	EA	1
6	12	PAHZZ	5330-00-585-7502	8344200-1	19207	GASKET:REAR BEARING COVER,INPUT SHAFT (PART OF SET 5330-00-752-1437)	EA	1
6	13	PAHZZ	5340-00-752-1372	7521372	19207	PLUG EXPANSION:SHIFTER SHAFT	EA	1
6	14	PAHZZ	4820-00-808-7442	11621193	19207	VALVE,DIAPHRAM:HOUSING	EA	1
6	15	XAHZZ		11621147	19207	HOUSING:TRANSFER CASE AND COVER ASSEMBLY	EA	1
6	16	PAFZZ	5330-00-311-7774	7971280	19207	GASKET:TOP ACCESS COVER (PART OF SET 5330-00-752-1437)	EA	1
6	17	PAFZZ	2520-00-692-5753	7735641	19207	COVER:TRANSFER CASE,TOP ACCESS	EA	1
6	18	PAOZZ	4820-00-726-4719	5196397	19207	VALVE,AIR PRESSURE,ASSEMBLY:BREATHER TRANSFER CASE	EA	1
6	19	PAFZZ	5305-00-543-4372	MS90728-58	96906	SCREW,CAP,HEXAGON HEAD:TOP COVER	EA	4
6	20	KFHZZ		7521364	19207	GASKET:TRANSFER CASE HOUSING (PART OF SET 5330-00-752-1437)	EA	1
6	21	PAHZZ	2520-00-781-6264	8675959	19207	COVER,TRANSFER,TRANSMISSION:FRONT	EA	1
6	22	PAHZZ	5305-00-071-1789	MS90728-88	96906	SCREW,CAP,HEXAGON HEAD:TRANSFER COVER,FRONT	EA	22
6	23	PAHZZ		10938287	19207	SEAL,PLAIN,ENCASED:SHIFTER SHAFT	EA	1
6	24	PAHZZ	5305-00-139-4620	11609328-2	19207	SCREW,CAP,HEXAGON HEAD:FRONT COVER	EA	12
6	25	PAOZZ	4730-00-737-5249	7375249	19207	PLUG,PIPE,MAGNETIC:HOUSING	EA	1
6	26	PAHZZ	5310-00-880-7745	MS51968-11	96906	NUT,PLAIN,HEXAGON:HOUSING FRONT COVER	EA	21
6	27	PAHZZ	5315-00-699-8460	7521237	19207	PIN,STRAIGHT,HEADLESS:BEARING RETAINER, REAR INPUT SHAFT	EA	1
6	28	PAOZZ	4730-00-044-4655	444655	19207	PLUG,PIPE:HOUSING	EA	1
6	29	KFHZZ	5365-00-752-1277	7521277	19207	SHIM:REAR BEARING RETAINING (PART OF SET 5330-00-752-1437)	EA	V
6	30	PAHZZ	5330-00-143-8666	7521241	19207	SEAL,PLAIN,ENCASED,OUTPUT SHAFT	EA	1
6	31	PAHZZ	2520-00-024-6540	7521275	19207	CAP,REAR,BEARING:RETAINER	EA	1
7	1	KFHZZ		7521230	19207	GASKET,COVER:FRONT PUTPUT DRIVE CASE (PART OF SET 5330-00-752-1437)	EA	1
7	2	XAHZZ		10948109	19207	CASE FRONT DRIVE OUTPUT:TRANSFER CASE F	EA	1
7	3	PAOZZ	4730-00-737-5248	8757704	19207	PLUG,PIPE:FILLER,HOUSING,OUTPUT SHAFT	EA	1
7	4	XAHZZ		8757713	19207	CASE FRONT DRIVE,OUTPUT E	EA	1

(1)	(2)	(3)	(4)	(5)	(6)	(7)	(8)
ILLUSTRATION							
(a)	(b)	SMR	NATIONAL	PART	FSCM	DESCRIPTION	QTY.
FIG.	ITEM	CODE	STOCK	NUMBER			INC.
NO.	NO.		NUMBER			USABLE ON CODE	IN
							UNIT
						0801-POWER TRANSFER-CONTINUED	
7	5	PAHZZ	5330-00-579-8156	MS28775-212	96906	SEAL:SHIFTER SHAFT E	EA 1
7	6	PAHZZ	5330-00-285-5121	5164515	19207	WASHER, NON-METALLIC: SHIFTER SHAFT E	EA 1
7	7	PAHZZ	5330-00-353-2465	7702649	19207	RETAINER, PACKING: SHIFTER SHAFT E	EA 1
7	8	KPHZZ		7521574	19207	GASKET: FRONT BEARING RETAINER (PART OF SET 5330-00-752-1437)	EA 1
7	9	PAHZZ	2520-00-692-6091	7521573	19207	RETAINER, TRANSFER BEARING ASSEMBLY: FRONT BEARING, INPUT SHAFT	EA 1
7	10	PAHZZ	5330-00-143-8666	7521241	19207	SEAL, OIL, FRONT BEARING, INPUT SHAFT	EA 1
7	11	PAHZZ	2520-00-781-6265	7700135	19207	RETAINER, TRANSFER BEARING: FRONT BEARING, OUTPUT SHAFT	EA 1
7	12	PAHZZ	2520-00-752-1276	7521276	19207	FLANGE, COMPANION W/DEFLECTOR ASSEMBLY: INPUT SHAFT(1) OUTPUT SHAFT(1)	EA 2
7	13	PAHZZ	2520-00-692-6080	7521242	19207	DEFLECTOR: DIRT AND DUST COMPANION FLANGE	EA 1
7	14	PAHZZ	2520-00-134-5124	8757674	19207	FLANGE, DIFFERENTIAL: COMPANION FLANGE	EA 1
7	15	PAHZZ	5315-00-013-7214	MS24665-359	96906	PIN, COTTER: NUT RETAINING, INPUT AND OUTPUT SHAFTS	EA 2
7	16	PAHZZ	5310-00-752-1234	7521234	19207	NUT, SLOTTED HEXAGON: FLANGE INPUT AND OUTPUT SHAFTS	EA 2
7	17	PAHZZ	5310-00-752-1235	7521235	19207	WASHER, FLAT: FLANGE	EA 2
7	18	PAHZZ	5305-00-071-1788	MS90728-87	96906	SCREW, CAP, HEXAGON: RETAINER AND GEAR COVER	EA 15
7	19	PAHZZ	5310-00-209-0965	MS35338-47	96906	WASHER, LOCK: BEARING RETAINER AND GEAR COVER	EA 19
8	1	PAHZZ	5365-00-752-1584	7521584	96906	RING, RETAINING: REAR BEARING, INPUT SHAFT	EA 1
8	2	PAHZZ		713925	21450	BEARING, BALL, ANNULAR: REAR, INPUT SHAFT, TRANSFER GEARS	EA 1
8	3	PAHZZ	3120-00-752-1583	7521583	19207	BEARING WASHER, THRUST: GEAR, HELICAL, INPUT SHAFT	EA 2
8	4	PAHZZ	3020-00-786-0211	7363017	19207	GEAR, HELICAL: TRANSFER INPUT SHAFT	EA 1
8	5	PAHZZ	3110-00-554-3078	700603	21450	BEARING, BALL, ANNULAR: TRANSFER GEARS, INPUT SHAFT	EA 4
8	6	PAHZZ	5365-00-752-1575	7521575	19207	SPACER, SLEEVE: TRANSFER GEAR BEARINGS, INPUT SHAFT	EA 1
8	7	PAHZZ	3040-00-808-7441	11621145	19207	SHAFT, SHOULDERED: INPUT TRANSFER GEARS	EA 1
8	8	PAHZZ	2520-00-752-1385	7521385	19207	SHAFT: SHIFTER, LOW RANGE	EA 1
8	9	PAHZZ	3110-00-100-6156	MS19059-55	96906	BALL, BEARING: TRANSFER GEARS, SHIFTER SHAFT	EA 1
8	10	PAHZZ	2520-00-514-3782	5143782	19207	PLUNGER, SHIFTER SHAFT: TRANSFER GEARS	EA 1
8	11	PAHZZ	5360-00-692-6089	7521387	19207	SPRING, HELICAL COMPRESSION: SHIFTER SHAFT	EA 1
8	12	PAHZZ	5305-00-695-7174	7521390	19207	SETSCREWA: SHIFTER FORK	EA 1
8	13	PAHZZ	2520-00-786-0209	7363018	19207	FORK, SHIFTER SHAFT: TRANSFER GEARS	EA 1
8	14	PAHZZ	2520-00-752-1581	7521581	19207	SYNCHRONIZER ASSEMBLY: GEAR SHIFTING INPUT SHAFT	EA 1
8	15	PAHZZ	3120-00-753-9011	7539011	19207	SPACER, WASHER, THRUST: GEAR, HELICAL	EA 1
8	16	PAHZZ	3030-00-786-0213	7363016	19207	GEAR, HELICAL: INPUT SHAFT, LOW RANGE	EA 1
8	17	PAHZZ	3110-00-293-9305	700795	00000	BEARING, BALL, ANNULAR: FRONT INPUT SHAFT	EA 1
8	18	PAHZZ	3120-00-752-1487	7521487	19207	BEARING, WASHER, THRUST: FRONT, INPUT SHAFT	EA 1
8	19	PAHZZ	5305-00-071-1786	MS90728-85	96906	SCREW, CAP, HEXAGON HEAD: RETAINER DRIVE GEAR, COUN- TERS shaft	EA 4
8	20	PAHZZ	5310-00-832-7904	8327904	19207	LOCK ASSEMBLY: COUNTERSHAFT BEARING AND DRIVE GEAR RETAINER	EA 2
8	21	PAHZZ	2520-00-752-1373	7521373	19207	PLATE: RETAINER, BEARING AND COUNTERSHAFT	EA 2

(1)	(2)	(3)	(4)	(5)	(6)	(7)	(8)
ILLUSTRATION							QTY.
(a)	(b)	SMR	NATIONAL	PART	FSCM	DESCRIPTION	U/M
FIG.	ITEM	CODE	STOCK	NUMBER			INC.
NO.	NO.		NUMBER			USABLE ON CODE	IN
							UNIT
						0801-POWER TRANSFER-CONTINUED	
8	22	PAHZZ	3020-00-303-5106	7521438	19207	GEAR, HELICAL; DRIVE, FRONT, COUNTERSHAFT E	EA 1
8	23	PAHZZ	5365-00-752-1374	7521374	19207	RING, RETAINING: FRONT BEARING CUP, COUNTERSHAFT E	EA 1
8	24	PAFZZ	3110-00-013-7743	10948082	19207	BEARING, CUP, CONE AND ROLLER, TAPERED: FRONT AND REAR, COUNTERSHAFT	EA 2
8	25	PAFZZ	3020-00-312-8348	7521376	19207	GEAR, HELICAL: LOW RANGE, COUNTERSHAFT	EA 1
8	26	PAFZZ	5315-00-850-7038	MS35756-105	96906	KEY, WOODRUFF: COUNTERSHAFT	EA 2
8	27	PAFZZ	2520-00-752-1340	7521340	19207	COUNTERSHAFT: TRANSFER E	EA 1
8	28	PAFZZ	3040-00-808-7448	11621191	19207	SHAFT SHOULDERED: TRANSFER COUNTERSHAFT F	EA 1
8	NI	PAFZZ	3020-00-692-6084	7521375	19207	GEAR, HELICAL: HIGH RANGE COUNTERSHAFT	EA 1
8	NI	PAHZZ	5365-00-808-7423	10948103	19207	SPACER, SLEEVE: COUNTERSHAFT STEEL TUBE F	EA 1
8	NI	PAHZZ		10924755	19207	RETAINER: COUNTERSHAFT F	EA 1
9	1	PAHZZ	3110-00-165-6329	10948080	19207	BEARING ASSEMBLY ROLLER: REAR OUTPUT	EA 1
9	2	PAHZZ	3020-00-312-8350	7521240	19207	GEAR, HELICAL: DRIVEN, OUTPUT SHAFT, REAR	EA 1
9	3	PAHZZ	5315-00-850-7038	MS35756-105	96906	KEY, WOODRUFF: OUTPUT SHAFT, REAR	EA 1
9	4	PAHZZ	2520-00-301-7734	8376462	19207	SHAFT, SHOULDERED, OUTPUT SHAFT, REAR E	EA 1
9	5	PAHZZ	3110-00-101-6480	712663	00000	BEARING, ROLLER: REAR OUTPUT SHAFT FRONT	EA 1
9	6	PAHZZ	5365-00-696-0268	7521434	19207	RING, RETAINING: FRONT BEARING CUP, REAR OUTPUT SHAFT	EA 1
9	7	PAHZZ	2520-00-737-2011	7372011	19207	SHAFT, OUTPUT, FRONT E	EA 1
9	8	PAHZZ	5315-00-281-7939	8329891	19207	KEY, WOODRUFF: OUTPUT SHAFT, FRONT E	EA 1
9	9	PAHZZ	2520-00-737-2012	7372012	19207	GEAR, TRANSMISSION: DRIVEN, OUTPUT SHAFT, FRONT E	EA 1
9	10	PAHZZ	2520-00-737-2010	7372010	19207	COLLAR, TRANSMISSION: CLUTCH, SHIFT E OUTPUT SHAFT	EA 1
9	11	PAHZZ	2520-00-737-1995	7371995	19207	SHIFTER FORK: DE-CLUTCH SHAFT E	EA 1
9	12	PAHZZ	5305-00-752-1391	7521391	19207	SETSCREW: FORK SHIFTER	EA 1
9	13	PAHZZ	2520-00-752-1341	7521341	19207	SHAFT: SHIFTER, REVERSE E	EA 1
9	14	PAHZZ	5360-00-737-2020	7372020	19207	SPRING, RETAINING: OIL SEAL AND BEARING E FRONT OUTPUT SHAFT	EA 1
9	15	PAHZZ	2520-00-513-5811	8329892	19207	CLUTCH ASSEMBLY: SPRAG UNIT E	EA 1
9	16	PAHZZ		8329893	19207	WASHER, FLAT, INNER RACE, SPRAG UNIT E	EA 1
9	17	PAHZZ	5365-00-696-0267	7521433	19207	RING, RETAINING: OIL SEAL AND BEARING FRONT OUTPUT SHAFT	EA 3
9	18	PAHZZ	3110-00-516-5491	ST202	31007	BEARING, BALL, ANNULAR: FRONT OUTPUT SHAFT	EA 1
9	219	PAHZZ	3120-00-752-1487	7521487	19207	BEARING, WASHER, THRUST: FRONT OUTPUT SHAFT	EA 1
10	1	PAHZZ	5305-00-071-2235	MS90725-16	96906	SCREW, CAP, HEXAGON HEAD: AIR CYLINDER COVER F	EA 4
10	2	PAHZZ	5310-00-145-2085	8327009	19207	WASHER, KEY: AIR CYLINDER COVER SCREW F	EA 4
10	3	PAHZZ	2520-00-808-7445	10948042	19207	COVER, AIR CYLINDER: SHIFTER SHAFT F	EA 1
10	4	PAHZZ	5365-00-832-7774	10913209	19207	GASKET: AIR CYLINDER TUBE F	EA 1
10	5	PAHZZ	3120-00-832-7334	8758292-2	19207	BUSHING, SLEEVE: AIR CYLINDER F	EA 1
10	6	PAHZZ	5310-00-225-6993	MS51922-33	96906	NUT, SELF-LOCKING, HEXAGON: PISTON RETAINING, AIR CYLINDER F	EA 1
10	7	PAHZZ	5310-00-177-0973	11609221	19207	WASHER, FLAT: PISTON RETAINING F	EA 1
10	8	PAHZZ	2520-00-832-8236	10948043	19207	PISTON, TRANSFER: AIR CYLINDER F	EA 1

(1)	(2)	(3)	(4)	(5)	(6)	(7)	(8)	
ILLUSTRATION							QTY.	
(a)	(b)	SMR	NATIONAL	PART	FSCM	DESCRIPTION	U/M	INC.
FIG.	ITEM	CODE	STOCK	NUMBER				IN
NO.	NO.		NUMBER			USABLE ON CODE		UNIT
						0801-POWER TRANSFER-CONTINUED		
10	9	PAHZZ	2520-00-832-8235	8758294	19207	SEAL,TRANSFER:PISTON,AIR CYLINDER F	EA	1
10	10	PAHZZ	5310-00-527-4222	8758299	19207	WASHER,FLAT:SHAFT,AIR CYLINDER F	EA	1
10	11	PAHZZ	2520-00-832-8074	10948099	19207	SHAFT,SHIFTER:CLUTCH,AIR CYLINDER F	EA	1
10	12	PAHZZ	9505-00-248-9850	MS20995-47	96906	WIRE,SAFETY:SHIFTER FORK SETSCREW F	FT	V
10	13	PAHZZ	5305-00-752-1391	7521391	19207	SETSCREW:SHIFTER FORK	EA	1
10	14	PAHZZ	2520-00-832-8071	10948100	19207	SHIFTER FORK:CLUTCH SHAFT,AIR CYLINDER F	EA	1
10	15	PAHZZ	2520-00-808-7428	10948108	19207	SEAT,HELICAL SPRING:SHIFTER SHAFT AIR CYLINDER F	EA	2
10	16	PAHZZ	5360-00-832-8072	10945186	19207	SPRING,HELICAL COMPRESSION:SHIFTER SHAFT, F	EA	1
						AIR CYLINDER		
10	17	PAHZZ	3110-00-165-6329	10948080	19207	BEARING,ROLLER,TAPERED:REAR OUTPUT SHAFT	EA	1
10	18	PAHZZ	5315-00-850-7038	MS35756-105	96906	KEY.WOODRUFF:REAR OUTPUT SHAFT	EA	1
10	19	PAHZZ	2520-00-832-7794	10937638	19207	SHAFT,REAR AXLE:REAR OUTPUT F	EA	1
10	20	PAHZZ	2520-00-832-8075	10948101	19207	SHAFT,AXLE,AUTOMOTIVE:FRONT OUTPUT F	EA	1
10	21	PAHZZ	3110-00-101-6480	712663	00000	BEARING,ROLLER,TAPERED:FRONT OUTPUT SHAFT	EA	1
10	22	PAHZZ	5305-00-165-8248	10937391	19207	SETSCREW:CLUTCH,DRIVING,OUTPUT SHAFT F	EA	1
10	23	PAHZZ	2520-00-832-8237	10948106	19207	CLUTCH,DRIVING,FRONT:OUTPUT SHAFT F	EA	1
10	24	PAHZZ	2520-00-808-7424	10948105	19207	CLUTCH,SLIDING,SLEEVE:OUTPUT SHAFT F	EA	1
10	25	PAHZZ	5365-00-696-0267	7521433	19207	RING,RETAINING:OIL SEAL AND BEARING	EA	3
10	26	PAHZZ	3110-00-516-5491	ST202	31007	BEARING,BALL,ANNULAR:FRONT OUTPUT SHAFT	EA	1
10	27	PAHZZ	3120-00-752-1487	7521487	19207	BEARING,WASHER,THRUST:FRONT OUTPUT SHAFT	EA	1
10	28	PAHZZ	5330-00-143-8666	7521241	19207	SEAL,PLAIN ENCASED:FRONT OUTPUT SHAFT	EA	1
		PAHZZ	5330-00-752-1437	7521437	19207	GASKET AND SHIM SET POWER TRANSFER	EA	1
10	29	PAHZZ	2520-00-394-9718	5704159	19207	KIT,TRANSFER:AIR CYLINDER	EA	1
6	8					SHIM:REAR BEARING COVER	EA	1
6	9					SHIM:REAR BEARING COVER	EA	1
6	12					GASKET:REAR BEARING COVER	EA	1
6	16					GASKET:TOP ACCESS COVER	EA	1
6	20					GASKET:HOUSING	EA	1
6	29					SHIM:REAR BEARING RETAINER	EA	1
7	1					GASKET:COVER,TRANSFER CASE	EA	1
7	8					GASKET:FRONT,BEARING RETAINER	EA	1
						GROUP 12 BRAKES		
						1201-PARKING BRAKE DRUM AND SHOES		
						AND RELATED PARTS		
11	1	PAOZZ	5306-00-752-1014	7521014	19207	BOLT,RIBBED NECK:PARKING BRAKE DRUM	EA	4
11	2	PAOZZ	2530-00-752-1490	7521490	19207	BRAKEDRUM:PARKING BRAKE	EA	1
11	3	XBFZZ	2530-00-622-3949	7397808	19207	BRACKET:BRAKE CABLE	EA	1
11	4	PAFZZ	5310-00-514-6674	MS35335-34	96906	WASHER,LOCK,EXTERNAL TOOTH:SHOE STOP BRACKET	EA	1
11	5	PAFZZ	5306-00-089-3837	8757599	19207	BOLT,MACHINE:BRAKE CABLE BRACKET	EA	1
11	6	PAOZZ	5305-00-071-1788	MS90728-87	96906	SCREW,CAP,HEXHEAD		
11	7	PAOZZ	5310-00-209-0965	MS35338-47	19207	WASHER,LOCK SPLIT:SHOE STOP BRACKET(1)	EA	1
11	8	XBOZZ	2530-00-752-9383	8757711	19207	SHIELD,GREASE:PARKING BRAKE DRUM	EA	1

(1)	(2)	(3)	(4)	(5)	(6)	(7)	(8)	
ILLUSTRATION								
(a)	(b)	SMR	NATIONAL	PART	FSCM	DESCRIPTION	U/M	QTY.
FIG.	ITEM	CODE	STOCK	NUMBER				INC.
NO.	NO.		NUMBER			USABLE ON CODE		IN
								UNIT
						1201-PARKING BRAKE DRUM AND SHOES AND RELATED PARTS-CONTINUED		
11	9	PAFZZ	2520-00-752-1276	7521276	19207	FLANGE,COMPANION W/DEFLECTOR ASSEMBLY: TRANSFER REAR SHAFT	EA	1
11	10	XAFZZ		7521242	19207	DEFLECTOR,DIRT AND LIQUID:COMPANION FLANGE	EA	1
11	11	PAOZZ	2520-00-134-5124	8757674	19207	FLANGE,COMPANION: BRAKE DRUM	EA	1
11	12	PAOZZ	5310-00-584-5272	MS35338-10	96906	WASHER,LOCK:PARKING BRAKE DRUM	EA	4
11	13	PAOZZ	5310-00-732-0560	MS51968-14	96906	NUT,HEXAGON:PARKING BRAKE DRUM	EA	4
11	14	PAOZZ	5315-00-013-7214	MS34665-359	96906	PIN,COTTER,SPLIT: BRAKE DRUM FLANGE	EA	1
11	15	PAOZZ	5310-00-752-1234	7521234	19207	NUT,SLOTTED,HEX HEAD: BRAKE DRUM FLANGE	EA	1
11	16	PAOZZ	5310-00-752-1235	7521235	19207	WASHER,FLAT: BRAKE DRUM FLANGE	EA	1
11	17	PAOZZ	5360-00-693-0615	7521284	19207	SPRING,HELICAL,EXTENSION: BRAKE SHOE ADJUSTING ANGLE RETURN	EA	1
11	18	PAFZZ	5310-00-926-5916	MS51968-12	96906	NUT,PLAIN,HEX: BRAKESHOE ADJUSTING SPRING SCREW	EA	1
11	19	XBFZZ	2530-00-752-1488	7521488	19207	BRACKET,ANGLE: BRAKESHOE ADJUSTING	EA	1
11	20	PAFZZ	5305-00-139-4620	11609328-2	19207	SCREW,CAP,HEX HEAD: BRAKESHOE ADJUSTING RETURN SPRING	EA	1
11	21	PAFZZ	5305-00-165-9250	11609328-1	19207	SCREW: BRAKESHOE ADJUSTING ANGLE	EA	1
11	22	PAFZZ	5305-00-071-1789	MS90728-87	96906	SCREW: BRAKESHOE ADJUSTING ANGLE	EA	1
11	23	PAOFF	2530-00-693-0680	8380559	19207	BRAKESHOE: ASSEMBLY: OUTER PARKING, W/LINING	EA	1
11	24	PAFZZ	5320-00-443-5065	10896748	19207	RIVET,TUBULAR: BRAKESHOE LINING	EA	8
11	25	PAFZZ	2530-00-289-7207	7368681	19207	LINING, FRICTION: BRAKESHOE, PARKING, INNER	EA	1
11	26	XAFZZ		8757706	19207	SHOE, BRAKE: OUTER, PARKING	EA	1
11	27	PAOZZ	4730-00-050-4208	MS15003-1	96906	FITTING, LUBRICATION: INNER AND OUTER BRAKESHOE	EA	2
11	28	PAOZZ	5310-00-333-7519	7064468	19207	WASHER, SLOTTED: BRAKE PIN	EA	2
11	29	PAOFF	2530-00-693-0679	8380558	19207	BRAKESHOE ASSEMBLY: INNER PARKING, W/LINING	EA	1
11	30	XAFZZ		8757707	19207	SHOE, BRAKE: INNER, PARKING	EA	1
11	31	PAFZZ	2530-00-736-8682	7368682	19207	LINING, FRICTION: BRAKESHOE, PARKING, INNER	EA	1
11	32	PAFZZ	5320-00-443-5065	10896748	19207	RIVET, TUBULAR: BRAKESHOE LINING	EA	8
11	33	PAOZZ	5315-00-316-0992	7064470	19207	PIN, SHOULDER, HEADLESS: INNER BRAKESHOE	EA	1
11	34	PAOZZ	5360-00-342-7071	7373243	19207	SPRING, HELICAL, EXTENSION: LEVER RETURN	EA	1
11	35	PAOFF	2530-00-736-8683	7368683	19207	LEVER AND PIN ASSEMBLY: PARKING BRAKE ACTUATING	EA	1
11	36	XAFZZ		8757709	19207	LEVER: PARKING BRAKE	EA	1
11	37	PAFZZ	5315-00-312-0831	7521448	19207	PIN, GROOVED, HEADLESS: PARKING BRAKE LEVER	EA	2
11	38	PAOZZ	5365-00-664-2779	MS16633-1098	96906	WASHER, RETAINING LEVER PIN	EA	2
11	39	PAOZZ	5340-00-321-6375	7064466	19207	SPRING: STABILIZER, BRAKESHOE	EA	1
11	40	PAOZZ	5310-00-279-3314	7064467	19207	WASHER, FLAT: BRAKE SPACER TIE RING	EA	4
11	41	PAOZZ	5305-00-206-0932	7064469	19207	SCREW, SHOULDER: OUTER BRAKESHOE STABILIZER	EA	1
11	42	PAOZZ	5306-00-312-0845	7521283	9207	BOLT, MACHINE: ANCHOR, OUTER BRAKESHOE	EA	1
11	43	XBOZZ		8757705	19207	WASHER FLAT: BRAKESHOE ANCHOR BOLT	EA	1
11	44	PAOZZ	5310-00-753-9169	7539169	19207	NUT, PLAIN, HEX: BRAKESHOE ANCHOR BOLT	EA	1
11	45	PAOZZ	5310-00-637-9541	MS122036	96906	WASHER, LOCK, SPLIT: BRAKESHOE STABILIZER SCREW	EA	1
11	46	PAOZZ	5310-00-732-0558	MS51967-8	96906	NUT, PLAIN, HEX: BRAKESHOE STABILIZER SCREW	EA	1
11	47	PAFZZ	5310-00-209-0965	MS35338-47	96906	WASHER, LOCK: SPLIT HELICAL	EA	2

(1)	(2)	(3)	(4)	(5)	(6)	(7)	(8)	
ILLUSTRATION							QTY.	
(a)	(b)	SMR	NATIONAL	PART	FSCM	DESCRIPTION	U/M	INC.
FIG.	ITEM	CODE	STOCK	NUMBER				IN
NO.	NO.		NUMBER			USABLE ON CODE		UNIT
						GROUP 20-POWER TAKE-OFF		
						2004-POWER TAKE-OFF ASSEMBLY		
12	1	PAFHH	2520-00-706-1136	7061136	19207	POWER TAKE-OFF TRANSMISSION:WITH ACCESSORY DRIVE, C SPICER MODEL WND-7-28 (P2)	EA	1
12	2	PAFHH	2520-00-706-1137	7061137	19207	POWER TAKE-OFF TRANSMISSION:SPICER MODEL D WN-7-28- (P1)	EA	1
12	3	PAHZZ	5306-00-404-0075	8344155	19207	BOLT,MACHINE:SHIFTER FORK,REVERSE GEAR SHAFT	EA	1
12	4	PAHZZ	2520-00-706-1273	7061273	19207	SHIFTER FORK:SHAFT,REVERSE GEAR	EA	1
12	5	PAHZZ	3110-00-902-1686	713421	00000	BEARING,ROLLER,NEEDLE:REVERSE GEAR SHAFT,FRONT	EA	1
12	6	PAHZZ	3040-00-706-1159	7061159	19207	SHAFT ASSEMBLY POWER TAKE-OFF:REVERSE GEAR	EA	1
12	7	XAHZZ		8743044	19207	SHAFT:REVERSE GEAR	EA	1
12	8	PAHZZ	5315-00-058-8581	MS35756-109	96906	KEY,WOODRUFF:SHAFT,REVERSE GEAR	EA	1
12	9	PAHZZ	3120-00-737-3115	7373115	19207	BEARING,SLEEVE:REVERSE GEAR SHAFT	EA	1
12	10	PAHZZ	5365-00-706-1276	7061276	19207	RING,RETAINING:DRIVE CLUTCH GEAR	EA	1
12	11	PAHZZ	5306-00-225-8494	MS90725-31	96906	BOLT:SHIFTER SHAFT	EA	1
12	12	PAHZZ	5310-00-080-6004	MS27183-14	96906	WASHER:BOLT,SHIFTER SHAFT	EA	2
12	13	PAHZZ	2520-00-706-1278	7061278	19207	BOOT,BELLOWS,RUBBER:SHIFTER SHAFT	EA	2
12	14	PAHZZ	5330-00-737-6534	7376534	19207	CUP RETAINING:TO ATTACH SHIFTER SHAFT BOOT D	EA	2
12	14	PAHZZ	5305-00-737-6534	7376534	19207	CUP RETAINING:TO ATTACH SHIFTER SHAFT BOOT C	EA	3
12	15	PAHZZ	5330-00-298-3947	7061272	19207	SEAL,SHIFTER:FORK ROD D	EA	2
12	15	PAHZZ	5330-00-298-3947	7061272	19207	SEAL,SHIFTER:FORK ROD C	EA	3
12	16	PAHZZ	4730-00-012-5947	125947	21450	PLUG,HOUSING	EA	1
12	17	PAHZZ	2520-00-706-1160	7061160	19207	CASE,HOUSING:POWER TAKE-OFF	EA	1
12	18	PAHZZ	3110-00-887-5524	MS19061-15	96906	BALL,BEARING:LOCK,SHIFTER SHAFT	EA	1
12	19	PAHZZ	2520-00-522-6128	5226128	19207	SPRING,HELICAL COMPRESSION:SHIFTER SHAFT LOCKING	EA	1
12	20	PFHZZ	2520-00-104-4603	5226140	19207	RETAINER,POPPET:SHIFTER SHAFT LOCKING	EA	1
12	21	PAHZZ	2520-00-706-1281	7061281	19207	WASHER,THRUST:REVERSE SHAFT GEAR	EA	2
12	22	PAHZZ	2520-00-706-1275	7061275	19207	GEAR,REVERSE SHAFT:POWER TAKE-OFF	EA	1
12	23	PAHZZ	5315-00-816-1794	MS24665-285	96906	PIN,COTTER:LOCKING PIN	EA	1
12	24	PAHZZ	5315-00-735-1406	7351406	19207	PIN,STRAIGHT HEADED:REVERSE GEAR SHAFT	EA	1
12	25	PAHZZ	5305-00-144-1495	10910354	19207	SCREW:COVER,ACCESS	EA	6
12	26	PAHZZ	5310-00-616-7998	MS35335-31	96906	WASHER,LOCK:COVER ACCESS	EA	6
12	27	PAHZZ	2520-00-354-0771	5323473	19207	COVER,ACCESS:HOUSING CASE	EA	1
12	28	PAHZZ	5330-00-234-3317	8327322	19207	GASKET:CASE AND COVER	EA	2
12	29	PAHZZ	2520-00-706-1267	7061267	19207	SHAFT,POWER TAKE-OFF:SHIFTER	EA	1
12	30	PAHZZ	5310-00-975-2075	MS35691-21	96906	NUT,PLAIN,HEXAGON:SHIFTER SHAFT ROD END CONNECTOR	EA	1
12	31	PAHZZ	5340-00-753-8679	7538679	19207	CONNECTOR,ROD END:SHIFTER SHAFT	EA	1
12	32	PAHZZ	2520-00-706-1269	7061269	19207	CAP,OUTPUT SHAFT:REAR BEARING D	EA	1
12	33	PAHZZ	3110-00-183-6723	MS17131-35	96906	BEARING,ROLLER,NEEDLE:GEAR SHAFT,ACCESSORY DRIVR	EA	1
12	34	PAHZZ	5310-00-732-0559	MS51968-8	96906	NUT,PLAIN,HEXAGON:POWER TAKE-OFF MOUNTING	EA	6
12	35	PAHZZ	5310-00-637-9541	MS122036	96906	WASHER,LOCK:POWER TAKE-OFF MOUNTING	EA	6
12	36	PAHZZ	5315-00-013-7258	MS24665-497	96906	PIN,COTTER:HOUSING	EA	1
12	37	PAHZZ	5307-00-753-8668	7538668	19507	STUD,PLAIN:POWER TAKE-OFF MOUNTING	EA	6
12	38	PAHZZ	2520-00-706-1266	7061266	19207	SHAFT,SHOULDERED:INOUT GEAR CLUSTER	EA	1

(1)	(2)	(3)	(4)	(5)	(6)	(7)	(8)	
ILLUSTRATION							QTY.	
(a)	(b)	SMR	NATIONAL	PART	FSCM	DESCRIPTION	U/M	INC.
FIG.	ITEM	CODE	STOCK	NUMBER				IN
NO.	NO.		NUMBER			USABLE ON CODE		UNIT
						2004-POWER TAKE-OFF ASSEMBLY-CONTINUED		
12	39	PAHZZ	2520-00-706-1265	7061265	19207	SPACER POWER TAKE-OFF:OUTPUT SHAFT	EA	1
12	40	PAHZZ	3110-00-516-5490	7539700	19207	BEARING,BALL,ANNULAR:OUTPUT SHAFT REAR	EA	1
12	41	PAHZZ	5365-00-508-4691	7538660	19207	RING,RETAINING:OUTPUT SHAFT GEAR	EA	1
12	42	PAHZZ	3120-00-753-8661	7538661	19207	WASHER,THRUST:OUTPUT SHAFT HELICAL GEAR	EA	1
12	43	PAHZZ	3020-00-347-4549	7538672	19207	GEAR,HELICAL:OUTPUT SHAFT	EA	1
12	44	PAHZZ	3020-00-318-0908	7538671	19207	GEAR,SPUR:OUTPUT SHAFT	EA	1
12	45	PAHZZ	2520-00-753-8673	7538673	19207	SHAFT,OUTPUT	EA	1
12	46	PAHZZ	5315-00-616-5527	MS35756-18	96906	KEY:OUTPUT SHAFT (1) ACCESSORY DRIVE SHAFT(1)	EA	2
12	47	PAHZZ	3110-00-156-4704	714248	00000	BEARING,BALL,ANNULAR:FRONT,OUTPUT SHAFT	EA	1
12	48	PAHZZ	5330-00-532-3606	5323606	19207	GASKET:OUTPUT SHAFT FRONT BEARING RETAINER	EA	1
12	50	PAHZZ	2540-00-626-2467	6262467	19207	CAP:OUTPUT SHAFT FRONT BEARING	EA	1
12	51	PAHZZ	5306-00-238-5605	878355	19207	SCREW,CAP,HEXAGON HEAD:OUTPUT SHAFT FRONT BEARING	EA	9
						RETAINER(4),ACCESSORY DRIVE HOUSING(5)		
12	52	PAHZZ	5310-00-514-6674	MS35335-20	96906	WASHER,LOCK:OUTPUT SHAFT FRONT BEARING RETAINER(4),	EA	9
						ACCESSORY DRIVE HOUSING(5)		
12	53	PAHZZ	3120-00-753-8656	7538656	19207	WASHER:INPUT SHAFT GEAR	EA	2
12	54	PAHZZ	2520-00-347-4571	7538674	19207	GEAR CLUSTER,HELICAL:INPUT SHAFT	EA	1
12	55	PAHZZ	3110-00-227-3074	7538658	19207	ROLLER ASSEMBLY:INPUT GEAR SHAFT D	EA	2
12	56	PAHZZ		7521058	19207	SCREW:SHIFTER FORK C	EA	1
12	57	PAHZZ	2520-00-706-1274	7061274	19207	SHIFTER FORK:ACCESSORY DRIVE C	EA	1
12	58	PAHZZ	2520-00-706-1268	7061268	19207	SHAFT,STRAIGHT:ACCESSORY DRIVE SHIFTER C	EA	1
12	59	PAHZZ	5330-00-706-1270	7061270	19207	GASKET:ACCESSORY DRIVE REAR OUTPUT COVER	EA	1
12	60	XAHZZ		7061194	19207	HOUSING:POWER TAKE-OFF ACCESSORY DRIVE C	EA	1
12	61	PAHZZ	5365-00-769-6481	7696481	19207	PLUG,MACHINE THREADED:ACCESSORY DRIVE HOUSING C	EA	1
12	62	PAHZZ	3110-00-753-9028	MS19059-53	96906	SPRING HELICAL COMPRESSION:ACCESSORY DRIVE C	EA	1
						SHIFTER SHAFT		
12	63	PAHZZ	3110-00-100-6155	MS19059-51	96906	BALL,BEARING:ACCESSORY DRIVE C	EA	1
						SHIFTER SHAFT		
12	64	PAHZZ	2520-00-706-1279	7061279	19207	BOOT,DUST AND MOISTURE:ACCESSORY DRIVE C	EA	1
						SHIFTER SHAFT		
12	65	PAHZZ	5330-00-559-8733	7061271	19207	SEAL,PLAIN ENCASED:DRIVE SHAFT, C	EA	1
						ACCESSORY DRIVE		
12	66	PAHZZ	5365-00-706-1280	7061280	19207	RING,RETAINING:ACCESSORY DRIVE C	EA	2
						SHAFT SEAL AND BEARING		
12	67	PAHZZ	5340-00-706-1277	7061277	19207	RING:BALL BEARING RETAINING,ACCESSORY DRIVE C	EA	1
12	68	PAHZZ	3110-00-144-8518	700078	00000	BEARING,BALL,ANNULAR:ACCESSORY C	EA	1
						DRIVE SHIFTER SHAFT		
12	69	PAHZZ	2520-00-706-1211	7061211	19207	SHAFT,SHOULDERED:ACCESSORY DRIVE GEAR C	EA	1
12	49	PAHZZ	2520-00-706-1210	7061210	19207	SLEEVE,SLIDING:CLUTCH C	EA	1
13	1	PAFZZ	5307-00-350-5532	8328010	19207	STUD,PLAIN:ASSEMBLY MOUNTING	EA	2
13	2	PAFZZ	5310-00-685-3228	MS35333-43	96906	WASHER,LOCK ASSEMBLY MOUNTING	EA	2
13	3	PAFZZ	5310-00-926-5916	MS51968-12	96906	NUT,PLAIN HEXAGON:ASSEMBLY MOUNTING	EA	2
13	4	PAHZZ	5305-00-071-1788	MS90728-87	96906	SCREW,CAP,HEXAGON HEAD:ASSEMBLY MOUNTING	EA	4

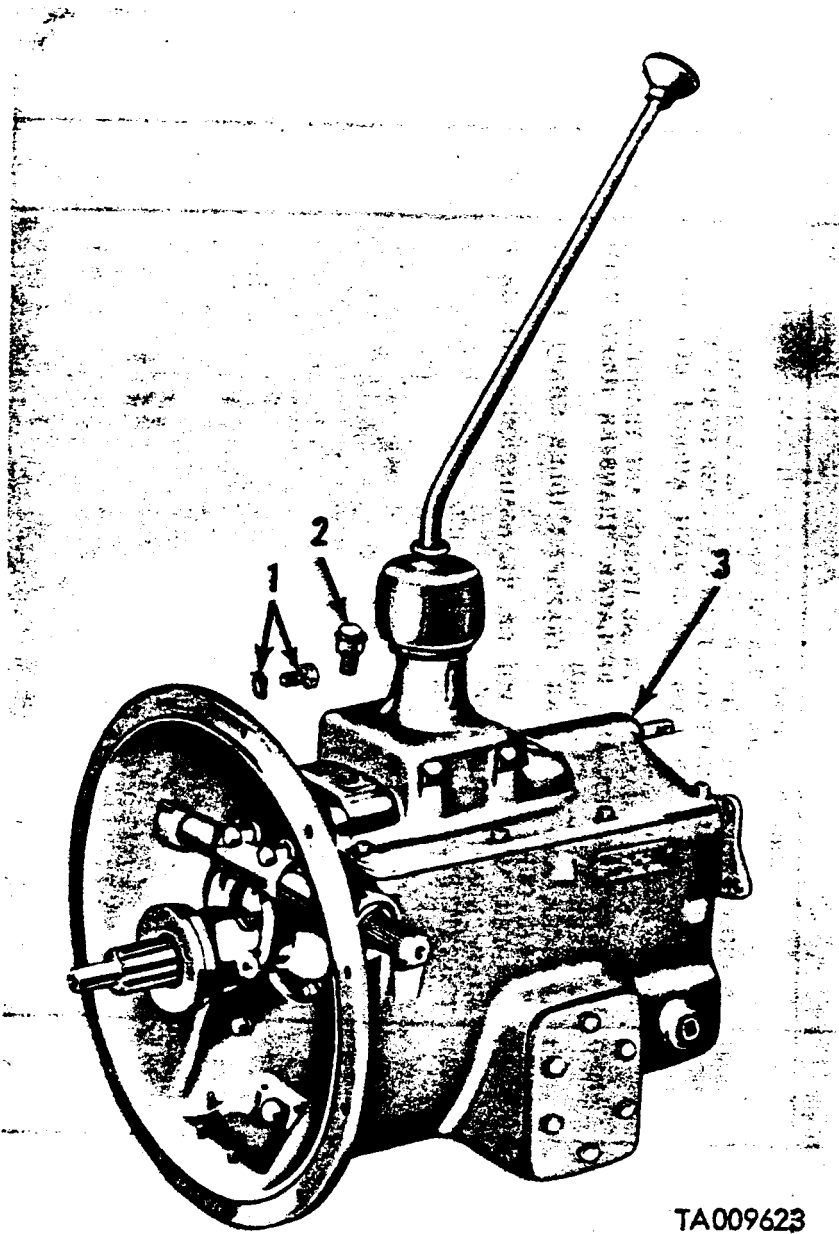
(1)	(2)	(3)	(4)	(5)	(6)	(7)	(8)
ILLUSTRATION							
(a)	(b)	SMR	NATIONAL	PART	FSCM	DESCRIPTION	QTY.
FIG.	ITEM	CODE	STOCK	NUMBER			INC.
NO.	NO.		NUMBER		USABLE ON CODE		IN
							UNIT
					2004-POWER TAKE-OFF ASSEMBLY-CONTINUED		
13	5	PAHZZ	5310-00-209-0965	MS35338-47	96906	WASHER,LOCK:ASSEMBLY MOUNTING	EA 4
13	6	PAFFF	2520-00-229-5673	11609228	19207	POWER TAKE-OFF,TRANSFER:ROCKWELL STANDARD MODEL P-136-C, WITH PUMP ASSEMBLY	EA 1
14	1	PAFZZ	4710-00-137-2019	11621138	19207	LINE,OIL:TRANSFER CASE TO OIL PUMP	EA 1
14	2	PAFZZ	4730-00-278-4596	8328015	19207	ADAPTER,STRAIGHT,PIPE-TO-TUBE:CONNECTOR OIL LINE TO PUMP	EA 1
14	4	PAFZZ	5330-00-522-8428	8344200-1	19207	GASKET:CARRIER TO TRANSFER MOUNTING	EA 1
14	5	PAOZZ	4730-00-639-9921	444595	21450	PLUG,PIPE:SLIDING CLUTCH FORK SETSCREW ACCESS	EA 1
14	6	PAHZZ	5306-00-262-9619	7412211	19207	BOLT,MACHINE:SHIFTER SHAFT LOCK ACCESS	EA 1
14	7	PAHZZ	2520-00-492-4348	10896746	19207	WASHER,SEAL:SHIFTER LOCK SPRING	EA 1
14	8	PAHZZ	5340-00-321-5710	6156769	19207	SPRING,HELICAL COMPRESSION:SHIFTING LEVER LOCK	EA 1
14	9	PAHZZ	3110-00-100-6159	MS19059-59	96906	BALL,BEARING:SHIFTING LEVER LOCK	EA 1
14	10	PAHZZ	5330-00-741-3286	7413286	19207	GASKET:GOVERNOR DRIVE HOLE	EA 1
14	11	PAHZZ	5365-00-741-3289	7413289	19207	PLUG,MACHUNE THREAD:GOVERNOR DRIVE HOLE	EA 1
14	12	XAFZZ		7413288	19207	LEVER:SHIFTER SHAFT	EA 1
14	13	PAFZZ	5310-00-227-1921	8328008	19207	WASHER,FLAT:SHIFTER SHAFT	EA 1
14	14	PAFZZ	5315-00-842-3044	MS24665-283	96906	PIN,COTTER:SHIFT LEVER	EA 2
14	15	PAFZZ	5310-00-165-8488	10896750	19207	NUT,PLAIN,SLOTTED,HEXAGON:SHIFT LEVER	EA 1
14	16	PAFZZ	5310-00-809-5998	MS27183-18	96906	WASHER,FLAT:SHIFT LEVER	EA 1
14	17	PAHZZ	5330-00-808-7417	11621135	19207	GASKET:OIL PUMP MOUNTING	EA 1
14	18	PAFZZ	5310-00-407-9566	MS35338-45	96906	WASHER,LOCK:OIL PUMP MOUNTING	EA 4
14	19	PAFZZ	5306-00-165-8251	11609558	19207	SCREW,HEXAGON HEAD:OIL PUMP MOUNTING	EA 3
14	20	PAFZZ	5306-00-226-4826	MS90728-33	96906	SCREW,CAP,HEXAGON HEAD:OIL PUMP MOUNTING3	EA 1
14	21	PAFZZ	2520-00-808-7379	11621137	19207	PUMP ASSEMBLY, OIL:TRANSFER POWER TAKE-OFF	EA 1
14	22	PAFZZ	5310-00-809-4085	MS27183-16	96906	WASHER,FLAT:CLAMP,OIL LINE	EA 1
14	24	PAFZZ	4730-00-127-4461	MS39202-6	96906	ELBOW PIPE-TO-TUBE OIL LINE TRANSFER CASE TO PUMP	EA 1
14	25	XAFZZ		7413265	19207	CLAMP:LINE,OIL PUMP	EA 1
14	26	PAFZZ	5325-00-741-2204	7412204	19207	GROMMET,RUBBER:OIL PUMP LINE	EA 1
15	1	PAHZZ	5310-00-426-0809	10896749	19207	NUT,HEXAGON,SLOTTED:RETAINER OUTPUT SHAFT	EA 1
15	2	PAHZZ	5315-00-298-1481	MS24665-357	96906	PIN,COTTER:RETAINER NUT,OUTPUT SHAFT	EA 1
15	3	PAHZZ	5330-00-231-0285	8757686	19207	RETAINER AND SEAL ASSEMBLY:SHAFT BEARING,OUTPUT	EA 1
15	3.1	PAHZZ	5310-00-919-8882	10938286	19207	SEAL,OIL:POWER TAKE-OFF SHAFT	EA 1
15	3.2	PAHZZ		7735601	19207	RETAINER ASSEMBLY:BEARING	EA 1
15	4	PAHZZ	5306-00-225-8497	MS90725-32	96906	SCREW,CAP,HEXAGON HEAD:RETAINER,BEARING AND SEAL	EA 4
15	5	PAHZZ	5310-00-407-9566	MS35338-45	19207	WASHER,LOCK:RETAINER,BEARING AND SEAL	EA 4
15	6	PAHZZ	5330-00-615-6756	6156756	19207	GASKET:BEARING CAP,OUTPUT SHAFT	EA 1
15	7	PAHZZ	3110-00-100-0799	137251	24617	CUP,TAPERD ROLLER BEARING:DRIVE SHAFT	EA 2
15	8	PAHZZ	3110-00-142-4364	148346	24617	CONE AND ROLLERS,TAPERED:DRIVE SHAFT	EA 2
15	9	PAHZZ	3020-00-741-3287	7413287	19207	GEAR,WORM:DRIVE GOVERNOR	EA 1
15	10	PAHZZ	5315-00-032-1872	5168861	19207	KEY,MACHINE:POWER TAKE-OFF SHAFT	EA 1
15	11	PAHZZ	5315-00-616-5514	MS35756-6	96906	KEY,WOODRUFF:POWER TAKE-OFF SHAFT	EA 1
15	12	PAHZZ	2520-00-355-7809	11621144	19207	SHAFT,POWER TAKE-OFF:DRIVE	EA 1

(1)	(2)	(3)	(4)	(5)	(6)	(7)	(8)
ILLUSTRATION							
(a)	(b)	SMR	NATIONAL	PART	FSCM	DESCRIPTION	QTY.
FIG.	ITEM	CODE	STOCK	NUMBER			INC.
NO.	NO.		NUMBER		USABLE ON CODE		IN
							UNIT
					2004-POWER TAKE-OFF ASSEMBLY-CONTINUED		
15	13	PAFZZ	9505-00-248-9850	MS20995F47	96906	LOCKWIRE:SETSCREW,SHIFTER FORK(1),SETSCREW SHIFTER FORK (1)	FT V
15	14	PAHZZ	5305-00-270-7328	8328007	19207	SETSCREW:LOCK,SHIFTER FORK	EA 1
15	15	PAHZZ	2520-00-734-9606	7349606	19207	SHIFTER FORK:CLUTCH	EA 1
15	16	PAHZZ	5305-00-490-1850	10896745	19207	SETSCREW:DRIVE CLUTCH	EA 1
15	17	PAHZZ	3040-00-077-1878	11621139	19207	COUPLING,SHAFT,RIGID:TRANSFER POWER TAKE-OFF CLUTCH	EA 1
15	18	PAHZZ	2520-00-808-7385	11621140	19207	CLUTCH,SLIDING SLEEVE:TRANSFER POWER TAKE-OFF	EA 1
15	19	PAHZZ	3120-00-516-7516	5284913	19207	BEARING SLEEVE:GOVERNOR SHAFT	EA 1
15	20	PAHZZ	5330-00-585-1064	MS29561-12	96906	PACKING,PREFORMED: "O" RING,SHIFTER SHAFT	EA 1
12	21	PAHZZ	2520-00-030-7262	7349680	19207	SHAFT,SHIFTER:SLIDING CLUTCH	EA 1
15	22	PAHZZ	5365-00-769-9003	7699003	19207	SHIM SET:POWER TAKE-OFF END PLAY	EA 1
				6143903	19207	SHIM:0=.003	EA 4
				5186593	19207	SHIM:.005	EA 2
				5186592	19207	SHIM:.010	EA 1
15	23	XAHZZ		11621143	19207	CARRIER ASSEMBLY	EA 1

SECTION III

SPECIAL TOOLS LIST

(1)	(2)	(3)	(4)	(5)	(6)	(7)	(8)	
ILLUSTRATION								
(a) FIG. NO.	(b) ITEM NO.	SMR CODE	NATIONAL STOCK NUMBER	PART NUMBER	FSCM	DESCRIPTION USABLE ON CODE	U/M	QTY. INC. IN UNIT
GROUP 26-TOOLS AND TEST EQUIPMENT								
2604-SPECIAL TOOLS								
16	1	PEHHH	5340-00-610-0919	7010362	19207	BRACKET,ANGLE:LEFT SIDE TRANSFER CASE TO STAND	EA	1
16	2	PEHHH	5340-00-610-0920	7010363	19207	BRACKET,ANGLE:RIGHT SIDE TRANSFER CASE TO STAND	EA	1
16	3	PEHHH	4910-00-694-4777	8708279	19207	FIXTURE,TRANSFER CASE:REMOVING AND/OR REPLACING TRANSFER CASE	EA	1
16	4	PEHHH	5120-00-338-6721	8708724	19207	PULLER KIT,MECHANICAL:TRANSMISSION AND TRANSFER	EA	1
16	5	PEHHH	5120-00-708-3241	7083241	19207	HANDLE,REMOVER AND REPLACER:TRANSFER (USED WITH REMOVER-REPLACER 7083241)	EA	1
16	6	PEHHH	5120-00-708-3247	7083247	19207	REMOVER AND REPLACER:TRANSFER IDLER SHAFT FRONT BEARING CUP	EA	1
16	7	PEHHH	5120-00-708-3254	7083254	19207	ADAPTER,MECHANICAL PULLER:TRANSMISSION IDLER GEAR SHAFT "NON-ILLUSTRATED"	EA	1
		PEFHH	4910-00-795-0356	7950356	19207	TOOL KIT:SPECIAL POWER TRAIN REBUILD	EA	1



TA009623

Figure 1. Transmission assembly

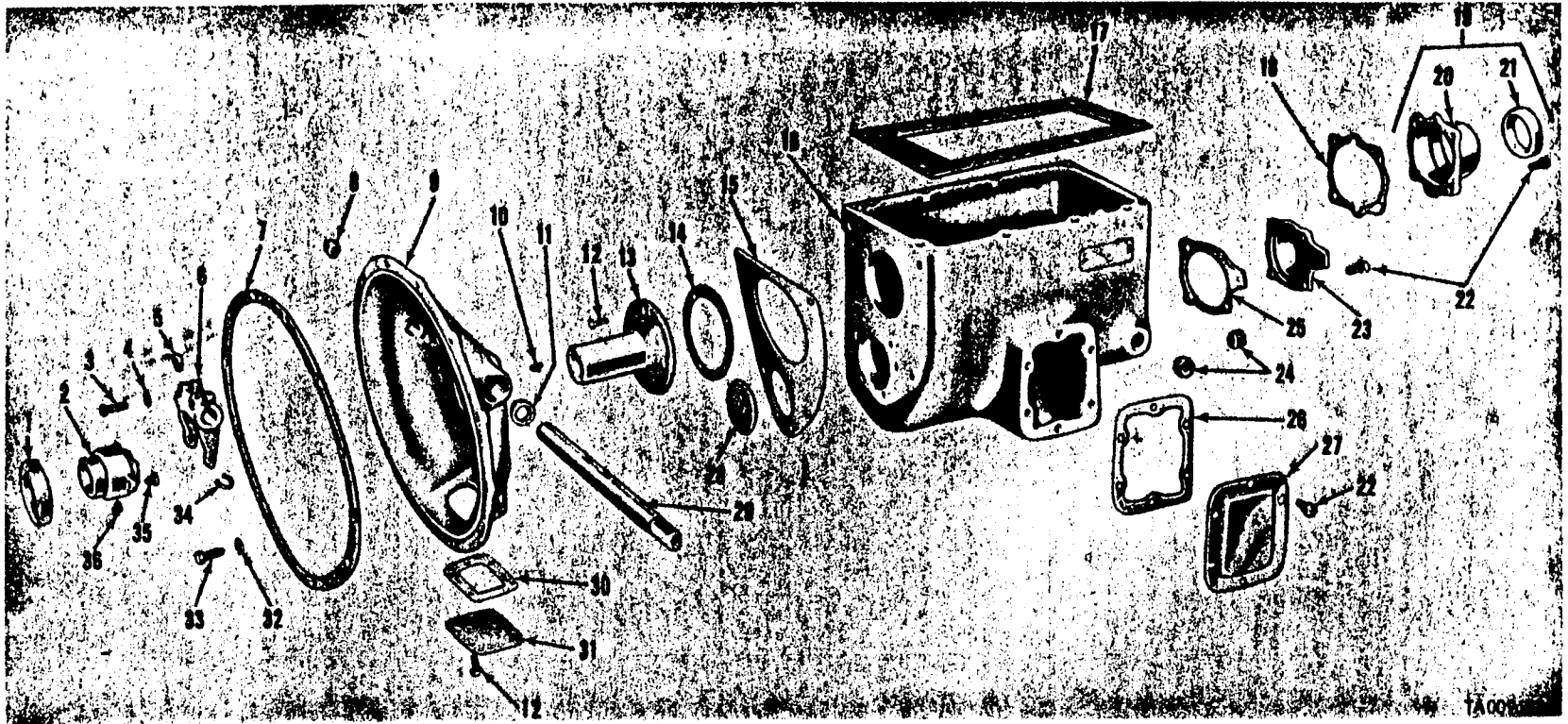
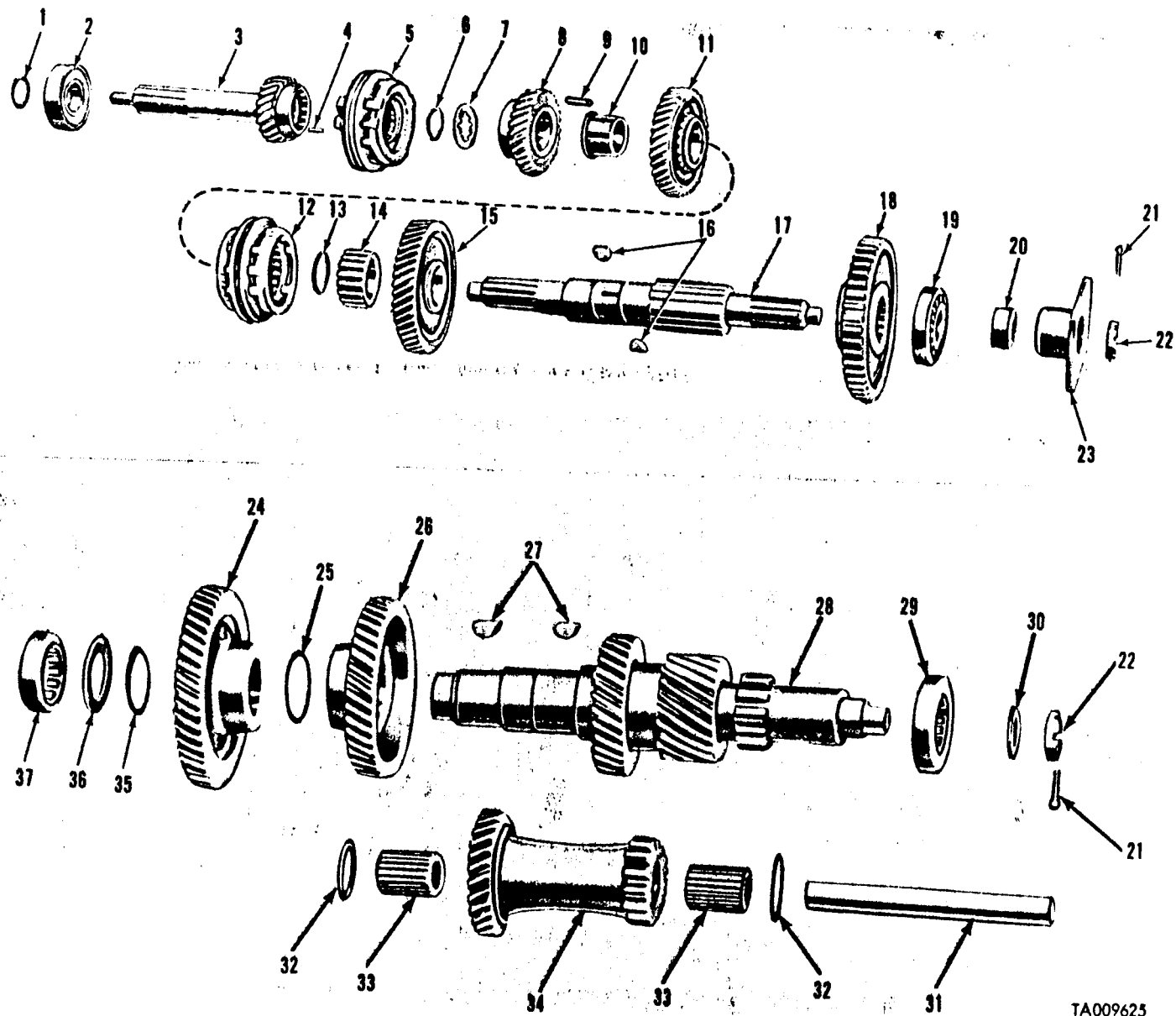


Figure 2. Transmission case, clutch housing and attaching parts.



TA009625

Figure 3. Transmission input and output shafts, countershafts and idler shafts with gears.

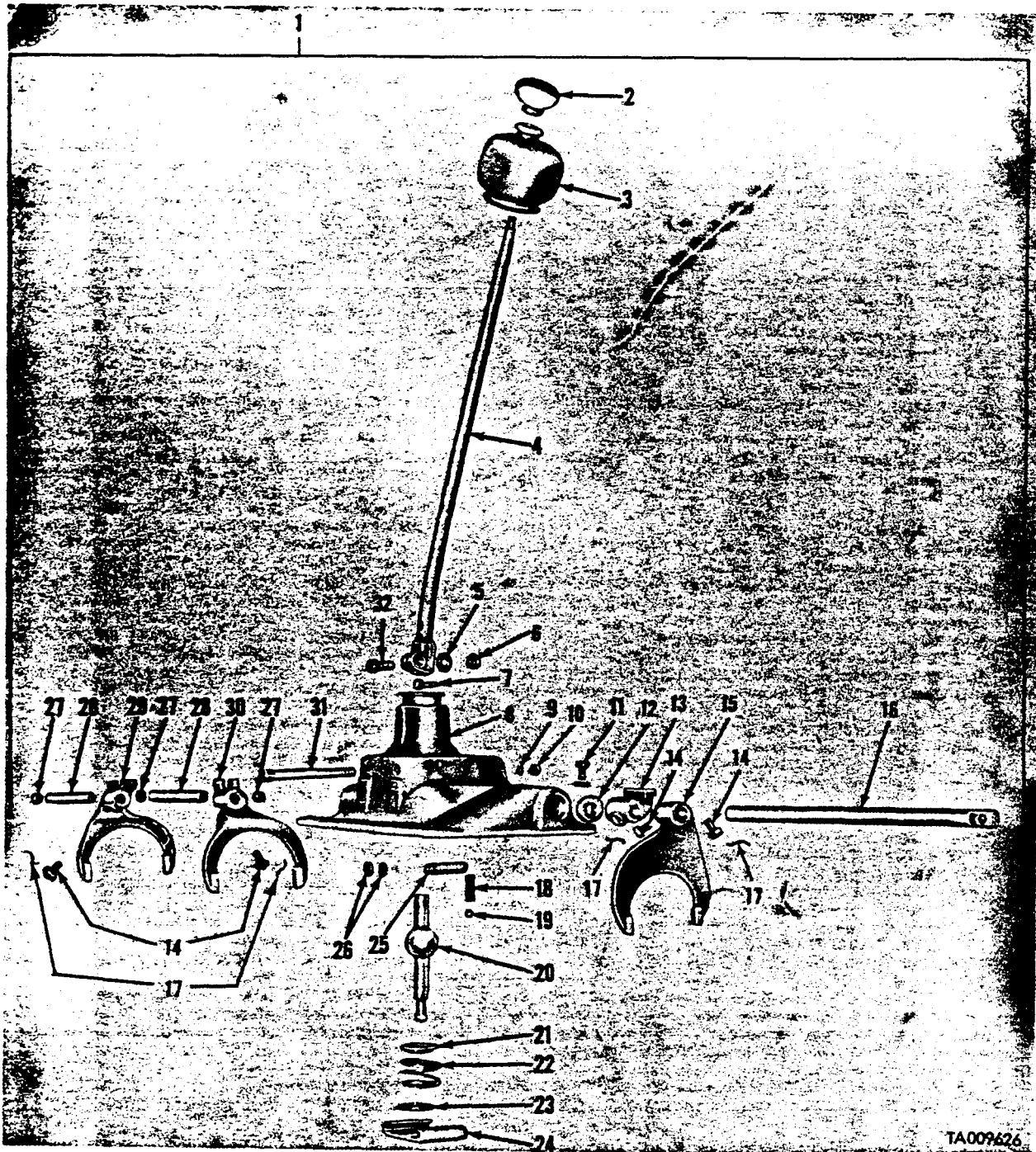


Figure 4. Transmission cover assembly.

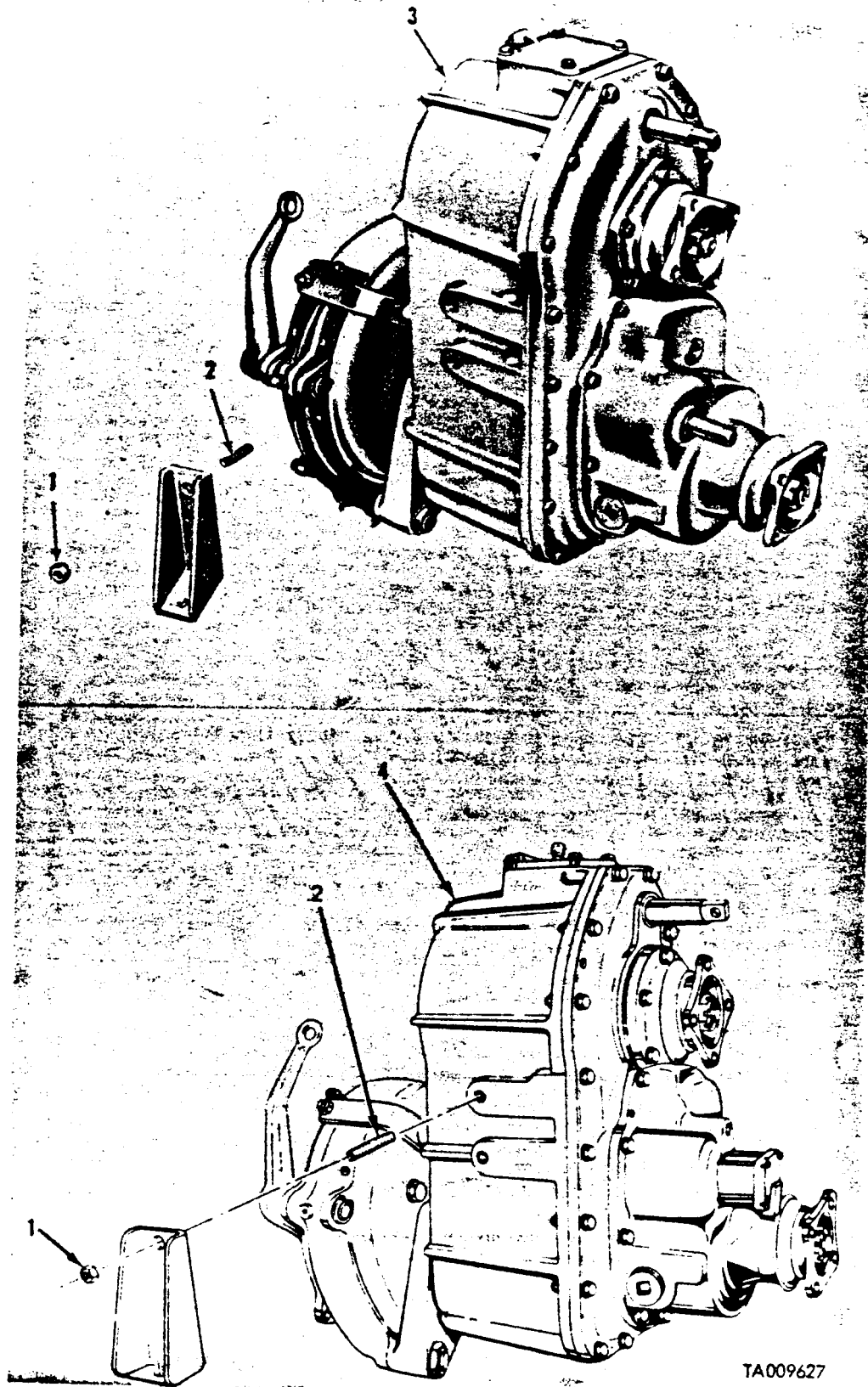


Figure 5. Power transfer assembly and attaching parts.

TA009627

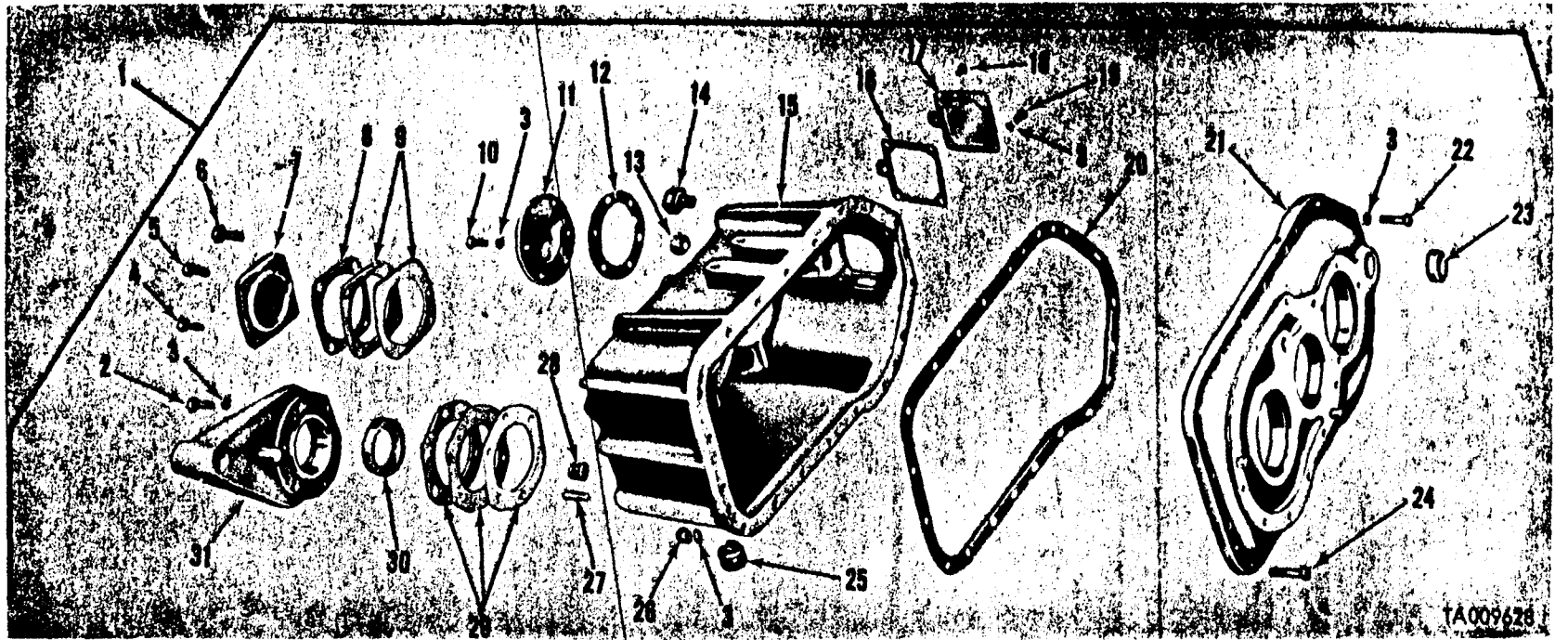
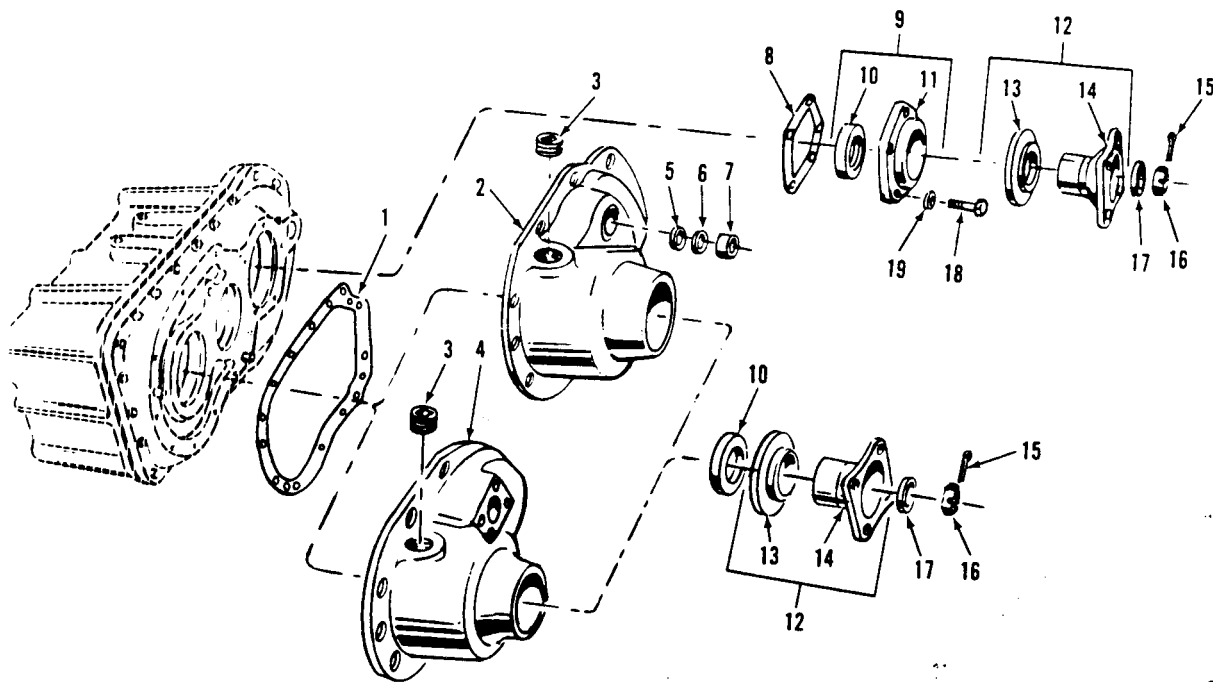
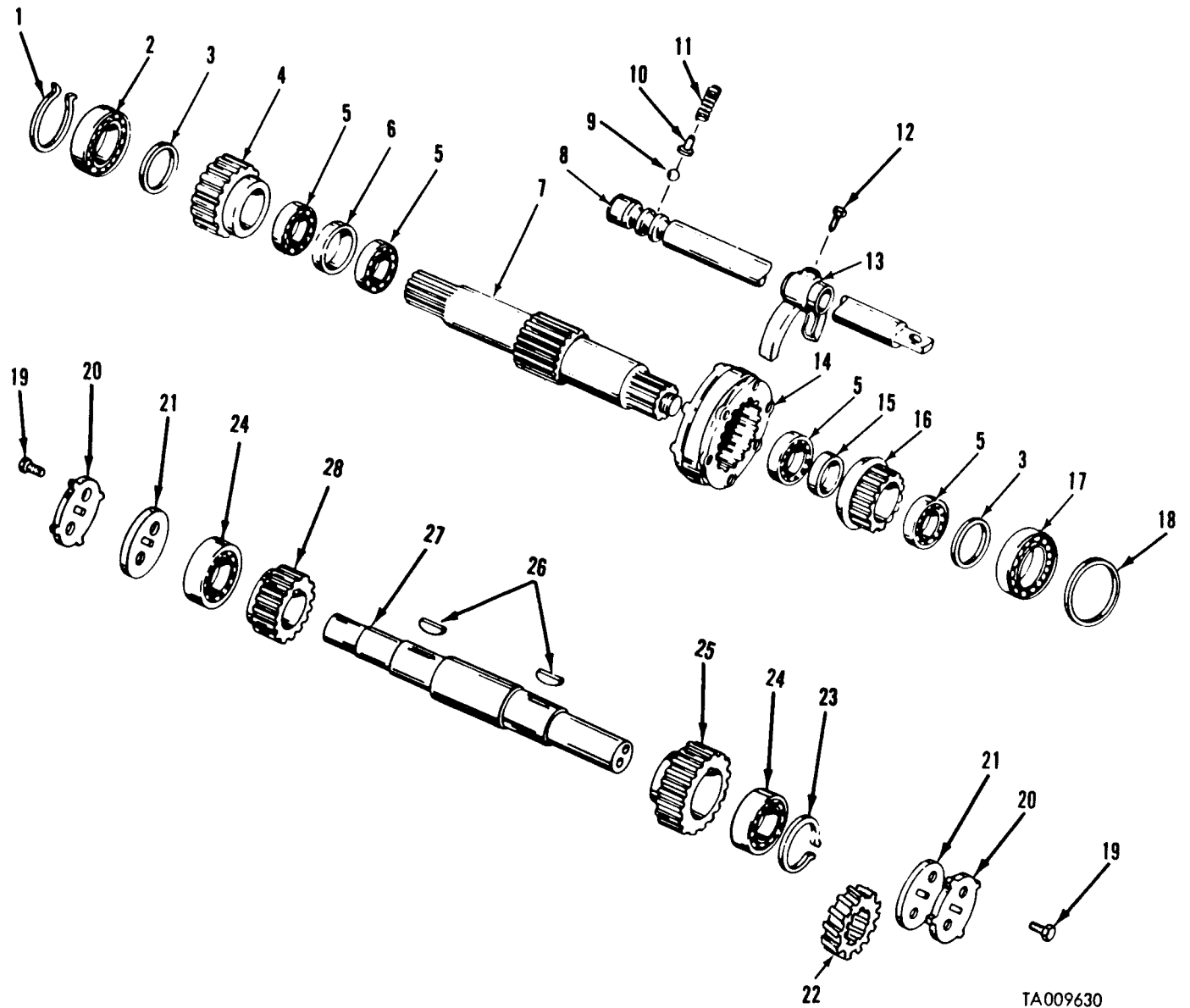


Figure 6. Housing, cover and related parts.



TA02i438

Figure 7. Transfer case and covers.



TA009630

Figure 8. Input shaft, countershafts and related parts.

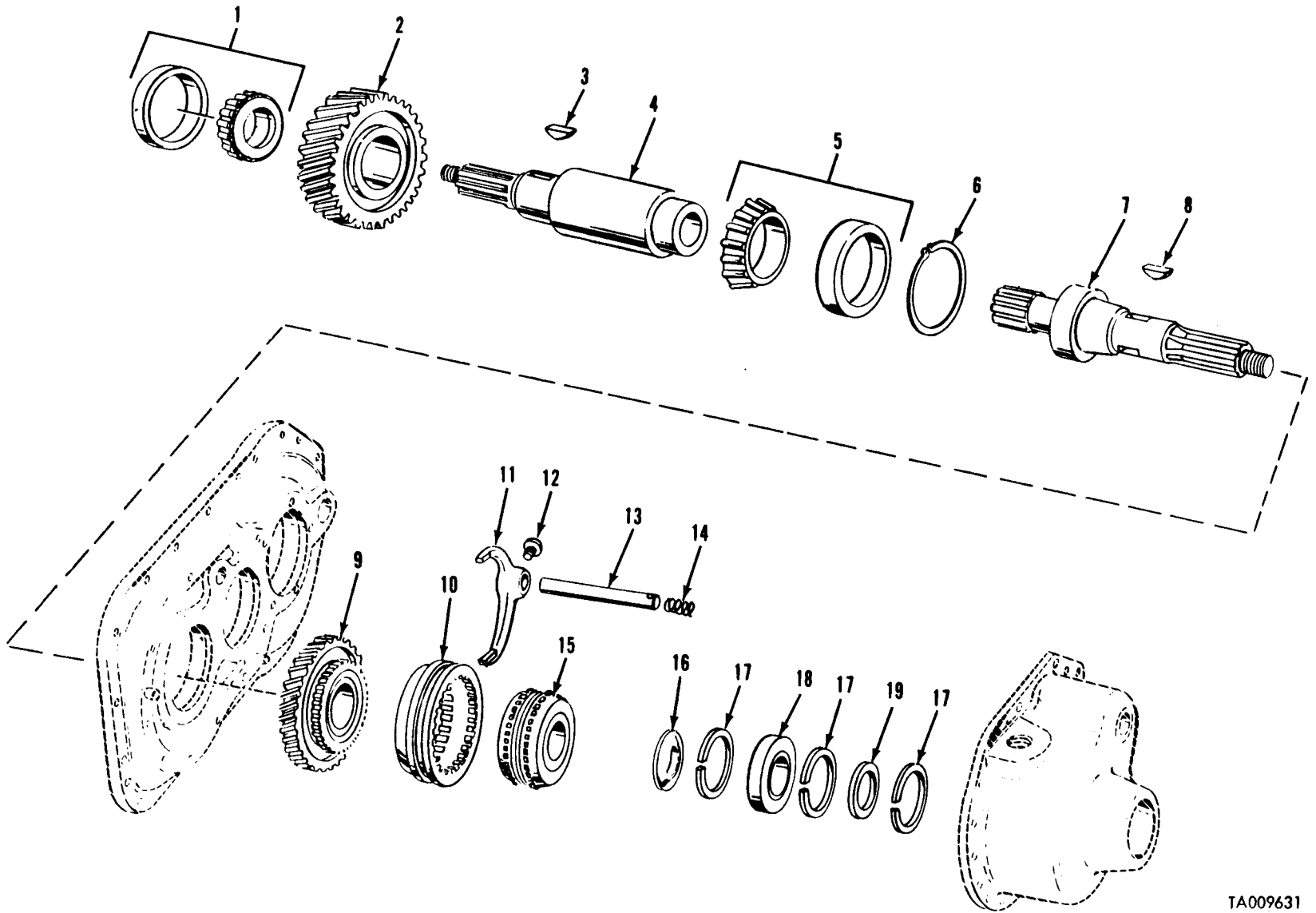


Figure 9. Transfer gears and related parts.

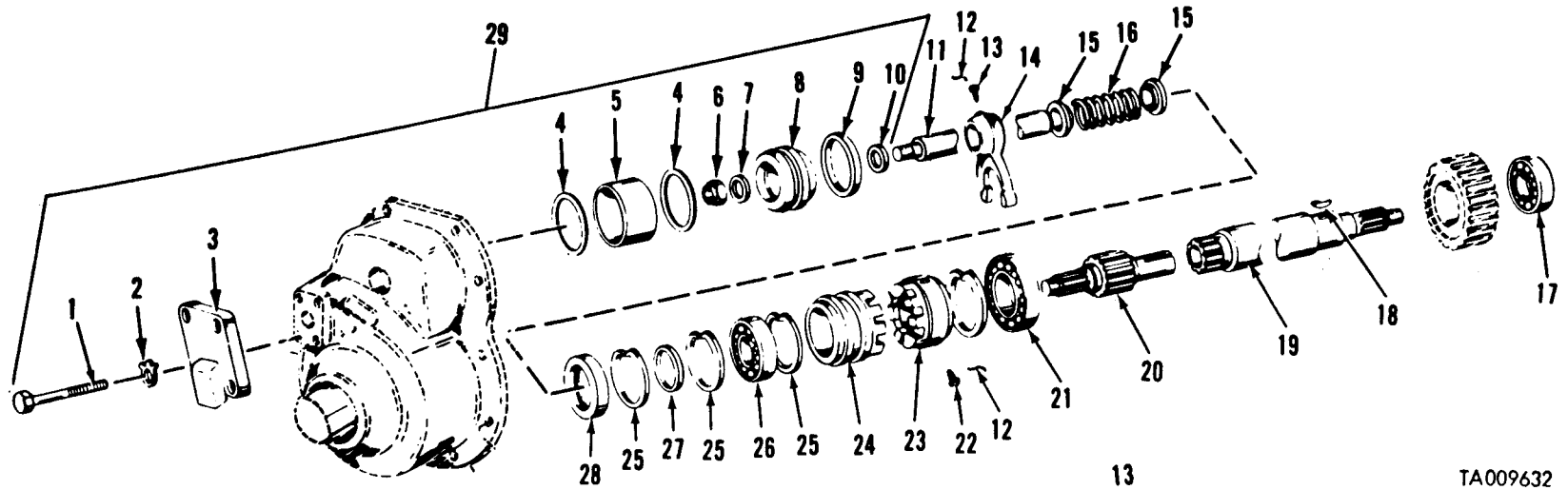


Figure 10. Transfer output shaft gears and air cylinders.

TA009632

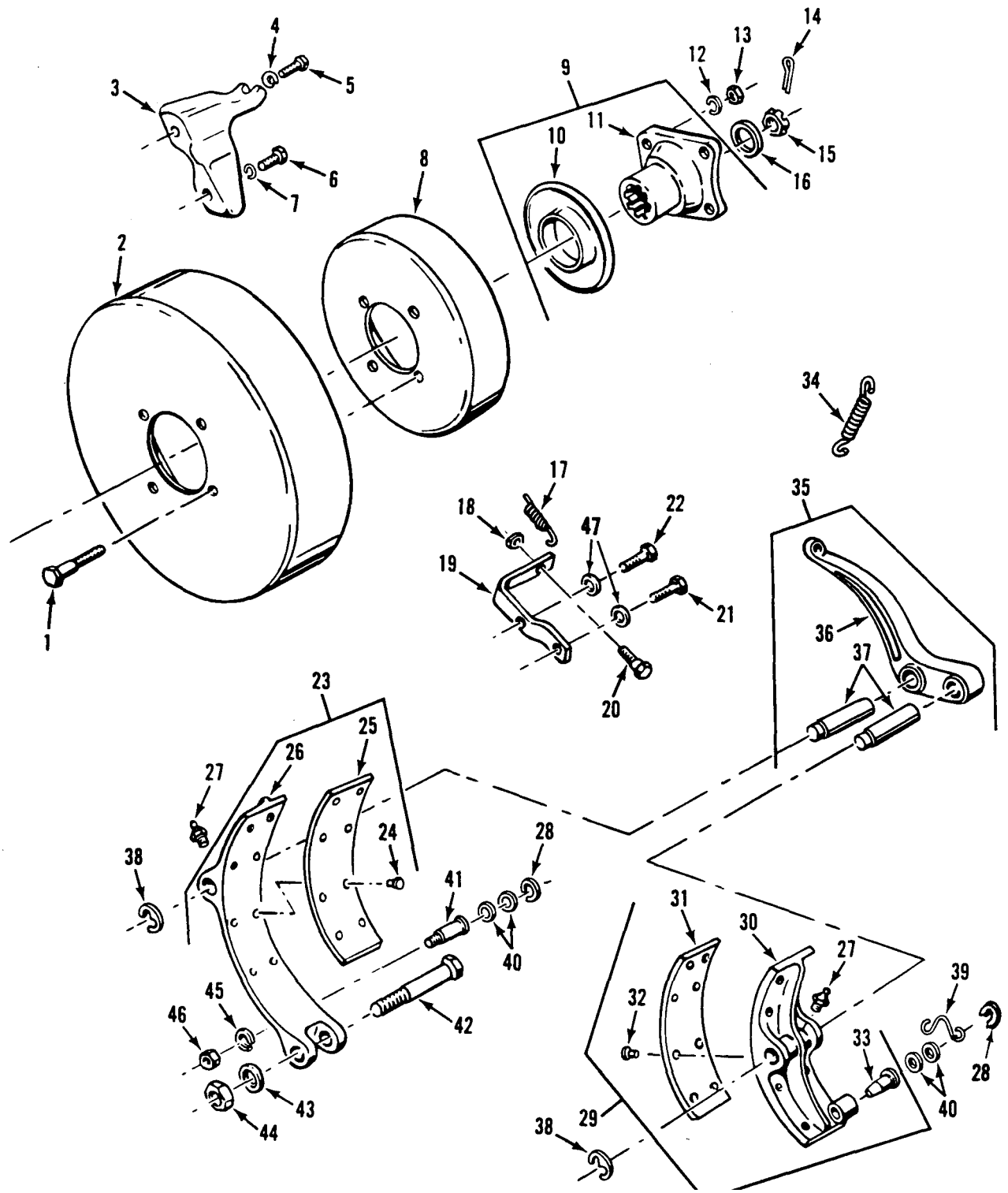


Figure 11. Parking brahe drum, shoes and related parts.

TA021439

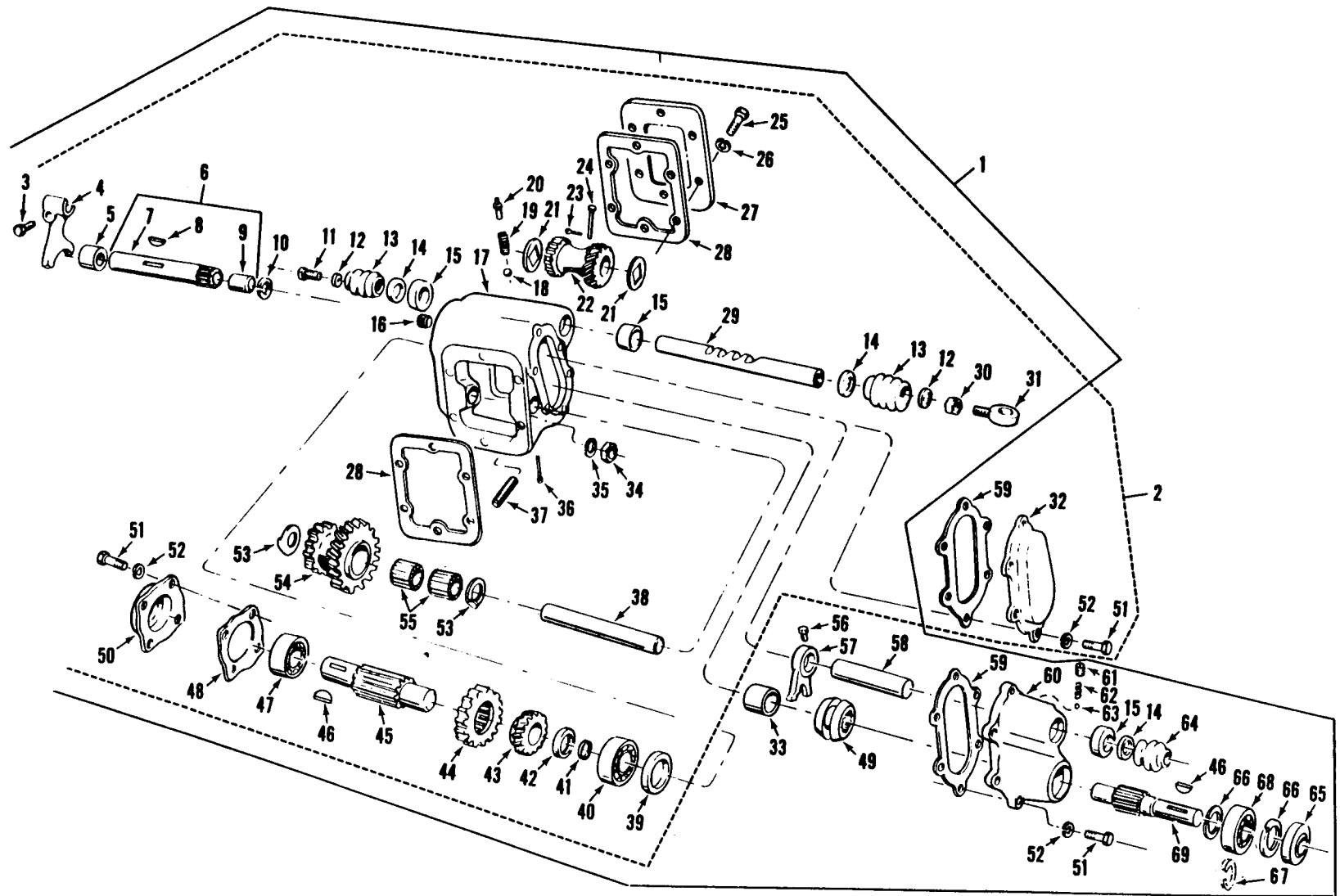


Figure 12. Transmission mounted power take-off assembly.

TA025462

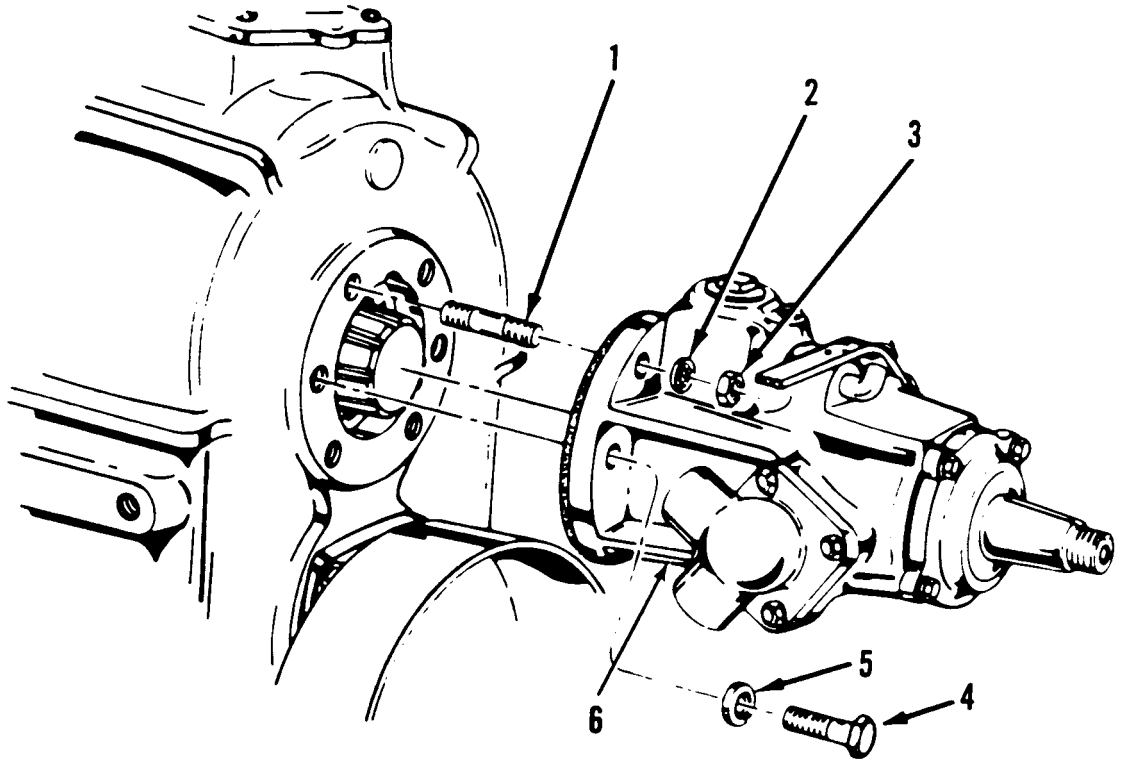
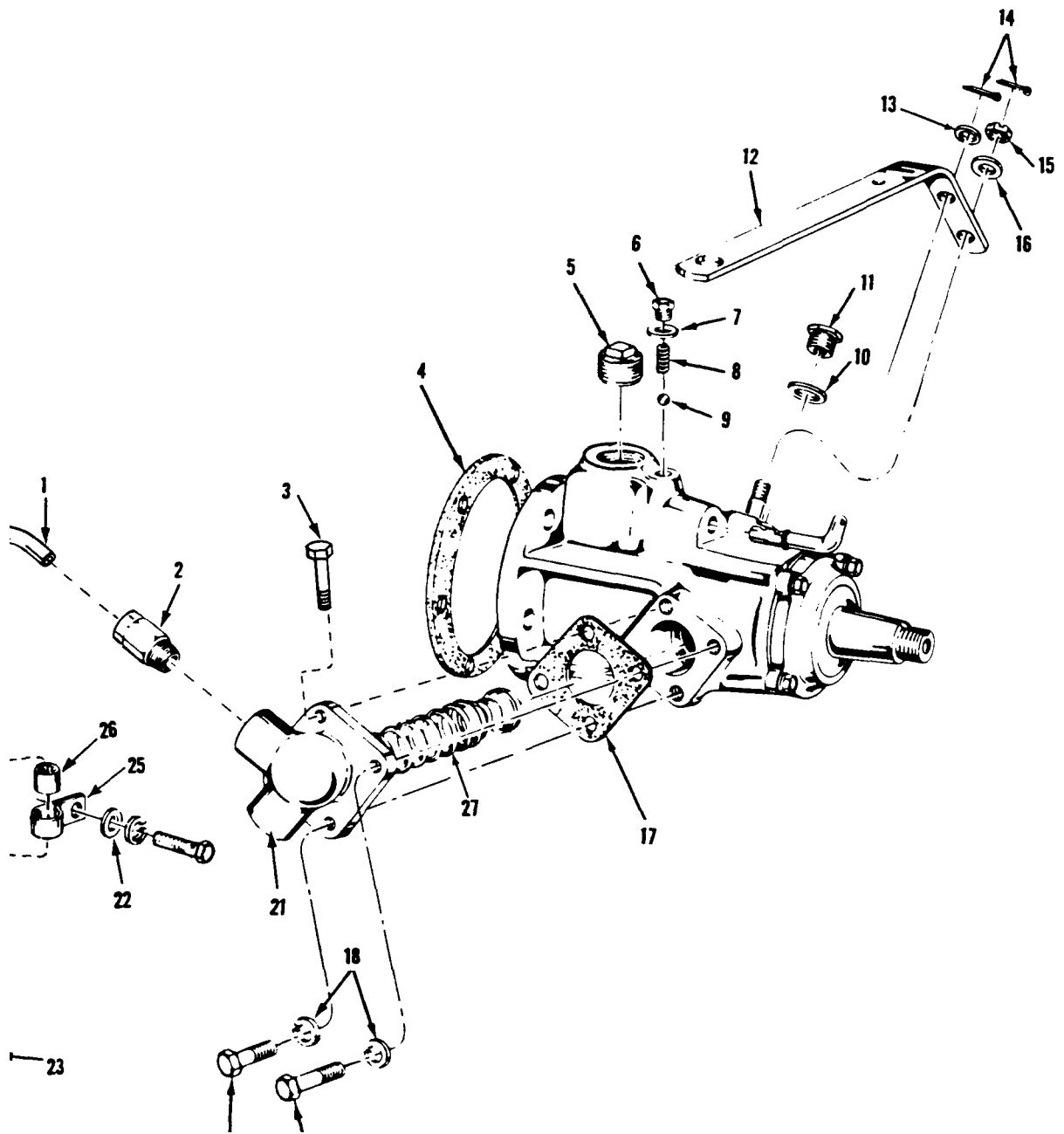


Figure 13. Transfer power take-off assembly.

TA009634



TA009635

Figure 14. Transfer power *take-off and related parts.*

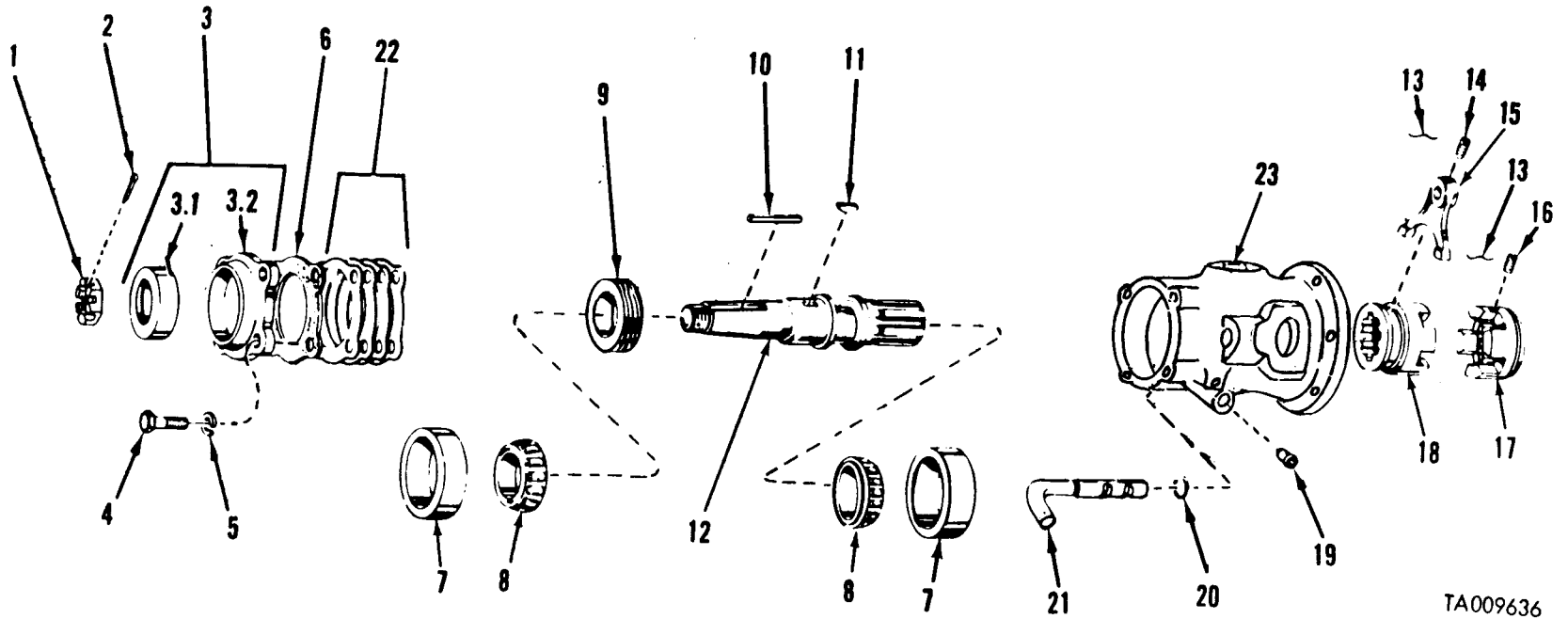


Figure 15. Transfer power take-off assembly and related parts.

TA009636

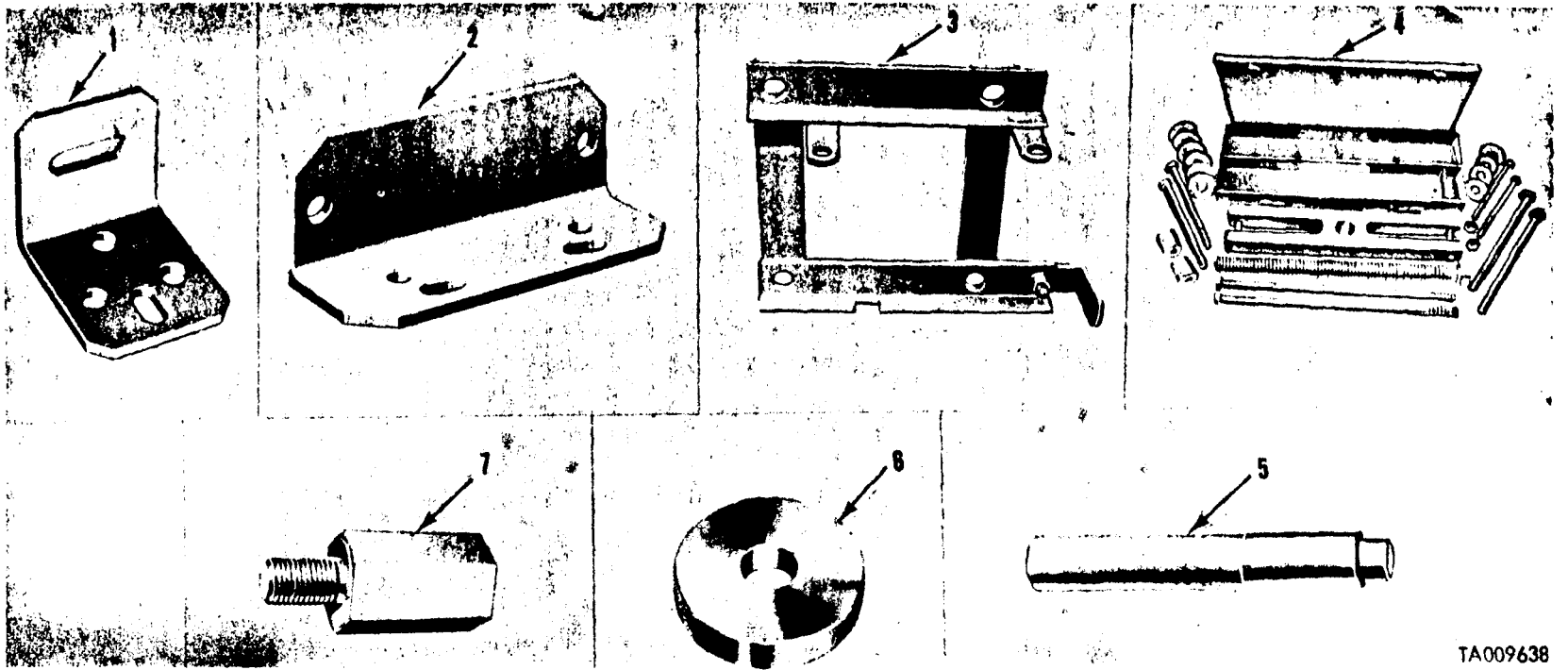


Figure 16. Special tools.

TA009638

SECTION IV

NATIONAL STOCK NUMBER AND PART NUMBER INDEX

National Stock Number Cross Referenced to Figure and Item Number

National Stock Number	Figure No.	Item No.	National Stock Number	Figure No.	Item No.
2520-00-001-7855	5	1	2520-00-752-0965	2	35
2520-00-024-6540	6	31	2520-00-752-0966	2	2
2520-00-030-7262			2520-00-752-0967	2	6
2520-00-089-8287	5	4	2550-00-752-0979	2	29
2520-00-090-5999	2	16	5330-00-752-0987	2	NI
2520-00-104-4603	12	20	2520-00-752-0994	3	3
2520-00-134-5124	7	14	2520-00-752-1003	3	23
2520-00-134-5124	11	11	2520-00-752-1019	3	17
2520-00-229-5673	13	6	2520-00-752-1022	3	5
2520-00-301-7734	9	5	2520-00-752-1023	3	12
2520-00-347-4520	1	3	2520-00-752-1032	2	28
2520-00-347-4571	12	54	2520-00-752-1037	3	28
2520-00-347-4591	4	1	2520-00-752-1039	2	25
2520-00-354-0771	2	27	2520-00-752-1047	3	31
2520-00-355-7809	15	12	2520-00-752-1057	4	29
2520-00-492-4348	14	7	2520-00-752-1059	4	30
2520-00-508-4664	2	13	2520-00-752-1060	4	15
2520-00-513-5811	9	17	2520-00-752-1093	4	20
2520-00-514-3782	8	10	2520-00-752-1094	4	13
2520-00-522-6128	12	19	2520-00-752-1096	4	21
2520-00-692-5753	6	17	2520-00-752-1097	4	16
2520-00-627-5978	4	8	2520-00-752-1099	4	28
2520-00-692-6065	2	19	2520-00-752-1276	7	12
2520-00-692-6070	2	23		11	9
2520-00-692-6072	4	3	2520-00-752-1340	8	28
2520-00-692-6080	7	13	2520-00-752-1341	9	15
2520-00-692-6091	7	9	2520-00-752-1373	8	21
2520-00-706-1136	12	1	2520-00-752-1385	8	8
2520-00-706-1137	12	2	2520-00-752-1439	6	7
2520-00-706-1160	12	17	2520-00-752-1441	6	8
2520-00-706-1210	12	70	2520-00-752-1446	6	9
2520-00-706-1211	12	69	2520-00-752-1581	8	14
2520-00-706-1265	12	39	2520-00-752-1585	6	11
2520-00-706-1266	12	38	2520-00-753-8673	12	45
2520-00-706-1267	12	29	2520-00-781-6264	6	21
2520-00-706-1268	12	58	2520-00-781-6265	7	11
2520-00-706-1269	12	32	2520-00-786-0209	8	13
2520-00-706-1273	12	4	2520-00-808-7379	14	21
2520-00-706-1274	12	57	2520-00-808-7385	15	18
2520-00-706-1275	12	22	2520-00-808-7424	10	24
2520-00-706-1278	12	13	2520-00-808-7428	10	15
2520-00-706-1279	12	64	2520-00-808-7445	10	3
2520-00-706-1281	12	21	2520-00-832-7794	10	19
2520-00-734-9606	15	15	2520-00-832-8071	10	14
2520-00-737-1995	9	13	2520-00-832-8074	10	11
2520-00-737-2010	9	12	2520-00-832-8075	10	20
2520-00-737-2011	9	9	2520-00-832-8235	10	9
2520-00-737-2012	9	11	2520-00-832-8236	10	8
2520-00-752-0952	2	9	2520-00-832-8237	10	23
2520-00-752-0956	2	30	2520-00-884-4832	3	26
2520-00-752-0965	2	34	2520-00-884-4833	1	3
2520-00-752-0966	3	2	2520-00-884-4834	3	8
2520-00-737-2010	9	12	2520-00-884-4835	3	24
2520-00-737-2011	9	9	2520-00-885-3423	3	3
2520-00-737-2012	9	11	2520-00-930-3138	4	4
2520-00-737-2020	9	16	2520-00-933-3112	4	24
2520-00-752-0952	2	9	2530-00-289-7207	11	25
2520-00-752-0956	2	30	2530-00-622-3949	11	3
2520-00-752-0958	2	15	2530-00-693-0679	11	29
2520-00-752-0959	2	7	2530-00-693-0680	11	23

National Stock Number Cross Referenced to Figure and Item Number-Continued					
National Stock Number	Figure No.	Item No.	National Stock Number	Figure No.	Item No.
2530-00-736-8682	11	31	3120-00-753-8656	12	53
2530-00-736-8683	11	35	3120-00-753-8661	12	42
2530-00-752-1488	11	19	3120-00-753-9011	8	15
2530-00-752-1488	11	19	3120-00-832-7334	10	5
2530-00-752-1490	11	2	4710-00-137-2019	14	1
2530-00-752-9383	11	8	4730-00-012-5947	12	16
2540-00-626-2467	12	50	4730-00-044-4655	6	28
3020-00-303-5106	8	22	4730-00-050-4208	2	36
3020-00-312-8348	8	26		11	27
3020-00-312-8350	9	3	4730-00-127-4461	14	24
3020-00-318-0908	12	44	4730-00-172-0034	2	10
3020-00-347-4549	12	43	4730-00-278-3380	2	24
3020-00-692-6084	8	29	4730-00-278-4596	14	2
3020-00-741-3287	15	9	4730-00-639-9921	14	5
3020-00-752-1005	3	14	4730-00-737-5248	7	3
3020-00-752-1006	3	18	4730-00-737-5249	6	25
3020-00-752-1015	3	8	4730-00-884-4838	3	8
3020-00-752-1016	3	11	4820-00-726-4719	1	2
3020-00-752-1017	3	15		6	18
3020-00-752-1029	3	26	4820-00-808-7442	6	14
3020-00-752-1030	3	34	4910-00-694-4777	16	3
3020-00-752-1031	3	24	4910-00-795-0356	NOT ILLUSTRATED	GROUP 2604
3020-00-786-0211	8	4	5120-00-338-6721	16	4
3020-00-786-0213	8	16	5120-00-708-3241	16	5
3040-00-077-1878	15	17	5120-00-708-3247	16	6
3040-00-706-1159	12	6	5120-00-708-3254	16	7
3040-00-808-7441	8	7		4	11
3040-00-808-7445	8	28	5305-00-071-1786	8	19
3110-00-013-7743	8	25	5305-00-071-1785	6	10
3110-00-100-0799	15	7	5305-00-071-1788	6	2
3110-00-100-6155	2	63		7	18
3110-00-100-6156	8	9		11	6
3110-00-100-6159	14	9		13	4
3110-00-101-6480	10	21	5305-00-071-1789	6	22
3110-00-117-0693	3	37		11	22
3110-00-120-4276	3	33	5305-00-071-2055	6	6
3110-00-142-4364	15	8	5305-00-071-2235	10	1
3110-00-142-6040	4	9	5305-00-139-4620	6	24
3110-00-144-8518	12	68	5305-00-144-1495	12	25
3110-00-144-8668	10	26	5305-00-165-8248	10	22
3110-00-155-6686	3	29	5305-00-165-8250	6	5
3110-00-155-6706	3	19	5305-00-206-0932	11	41
3110-00-156-4704	12	47	5305-00-270-7328	15	14
3110-00-165-6329	10	17	5305-00-317-3102	1	1
	9	1	5305-00-490-1850	15	16
3110-00-183-6723	12	33	5305-00-543-4372	6	19
3110-00-198-1502	2	1	5305-00-695-7174	8	12
3110-00-227-3074	12	55		11	20
3110-00-227-4123	3	4	5305-00-710-4195	4	32
3110-00-293-9305	8	17	5305-00-716-8184	2	33
3110-00-516-5490	12	40	5305-00-737-6534	12	14
3110-00-516-5491	9	20	5305-00-752-1058	4	14
	10	26	5305-00-752-1391	9	14
3110-00-554-3078	8	5	5306-00-021-4077	10	13
3110-00-753-9028	12	62		4	11
3110-00-554-5960	3	2		2	22
3110-00-887-5524	12	18	5306-00-044-5319	2	12
3110-00-902-1686	12	5	5306-00-009-3837	11	5
3120-00-516-7516	15	19	5306-00-165-8251	14	19
3120-00-737-3115	12	9	5306-00-174-4202	2	3
3120-00-752-1020	3	10	5306-00-225-8494	12	11
3120-00-752-1049	3	32	5306-00-225-8497	15	4
3120-00-752-1487	8	18	5306-00-225-8498	14	3
	9	21	5306-00-226-4826	14	20
	10	27	5306-00-238-5605	12	51
3120-00-752-1583	8	3	5306-00-262-9619	14	6

National Stock Number Cross Referenced to Figure and Item Number-Continued

National Stock Number	Figure No.	Item No.	National Stock Number	Figure No.	Item No.
5306-00-312-0845	11	42	5315-00-058-8581	12	8
5306-00-404-0075	12	3	5315-00-058-8583	3	27
5306-00-752-1014	11	1	5315-00-281-7839	9	10
5306-00-752-1055	4	31	5315-00-298-1481	3	21
5307-00-350-5532	13	1		15	2
5307-00-753-8668	12	37	5315-00-312-0831	11	37
5307-00-695-7213	5	2	5315-00-316-0992	11	33
5310-00-080-6004	12	12	5315-00-616-5514	15	11
5310-00-145-2085	10	2	5315-00-616-5527	12	46
5310-00-165-8488	14	15	5315-00-692-6101	4	7
5310-00-167-0820	4	26	5315-00-699-8458	3	9
5310-00-177-0973	10	7	5315-00-699-8460	6	27
5310-00-209-0965	2	4	5315-00-735-1406	12	24
	4	5	5315-00-816-1794	12	23
	6	3	5315-00-842-3044	14	14
	7	19	5315-00-850-7038	8	24
	11	7		9	4
	11	47		10	18
	13	5	5320-00-443-5065	11	24
5310-00-227-1921	14	13		11	32
5310-00-225-6993	10	6	5325-00-741-2204	14	26
5310-00-241-6664	5	1	5330-00-143-8666	6	30
5310-00-285-2169	3	7		7	10
5310-00-279-3314	11	40		10	28
5310-00-333-7519	11	28	5330-00-171-9052	12	49
	14	18	5330-00-231-0285	15	3
	15	5	5330-00-234-3317	2	25
5310-00-426-0809	15	1		12	28
5310-00-514-6674	11	4	5330-00-285-5121	7	6
	12	52	5330-00-298-3947	12	15
5310-00-527-4222	10	10	5330-00-311-7774	6	16
5310-00-529-4103	3	22	5330-00-350-9958	2	21
5310-00-584-5272	2	32	5330-00-353-2465	7	7
	11	12	5330-00-454-0338	4	12
5310-00-616-7998	12	26	5330-00-522-8421	14	4
	12	35	5330-00-532-3606	12	48
5310-00-661-9568	2	5	5330-00-559-8733	12	65
5310-00-685-3228	13	2	5330-00-579-8156	7	5
5310-00-732-0558	11	46	5330-00-585-1064	15	20
	12	34		14	4
5310-00-732-0560	11	13	5330-00-594-8953	2	14
5310-00-752-1036	3	30	5330-00-615-6756	15	6
5310-00-752-1048	3	36	5330-00-706-1270	12	59
5310-00-752-1234	7	16	5330-00-737-6534	12	14
	11	15	5330-00-741-3286	14	10
5310-00-752-1235	7	17	5330-00-752-0957	2	30
	11	16	5330-00-752-0958	2	15
5310-00-753-9169	11	44	5330-00-752-0959	2	7
5310-00-809-4085	14	22	5330-00-752-1061	2	17
5310-00-809-5998	14	16	5330-00-752-1437	7	
5310-00-832-7904	10	19	5330-00-752-7750	4	9
	8	20	5330-00-808-7417	14	17
5310-00-880-7745	6	26	5340-00-050-1593	4	27
	4	6	5340-00-321-6375	11	39
	11	18	5340-00-392-4017	2	34
5310-00-919-8882	15	3.1	5340-00-610-0919	16	1
5310-00-984-3807	4	10	5340-00-610-0920	16	2
5310-00-926-5916	13	3	5340-00-706-1277	12	67
5310-00-975-2075	11	17	5340-00-752-0976	2	8
	12	30	5340-00-752-1372	6	13
5310-00-982-6809	5	1	5340-00-753-8679	12	31
5315-00-012-4553	3	16	5355-00-962-3018	4	2
5315-00-013-7214	7	15	5360-00-342-7071	11	34
	11	14	5360-00-347-4563	4	18
5315-00-013-7258	12	36	5360-00-692-6074	4	25
5315-00-032-1872	15	10	5360-00-692-6075	4	22

National Stock Number Cross Referenced to Figure and Item Number-Contin

National Stock Number	Figure No.	Item No.	National Stock Number	Figure No.	Item No.
5360-00-692-6089	8	11	5365-00-752-1021	3	20
5360-00-693-0615	11	17	5365-00-752-1045	3	35
5360-00-737-2020	9	16	5365-00-752-1046	3	25
5360-00-832-8072	10	16	5365-00-752-1277	6	29
5365-00-508-4675	3	1	5365-00-752-1374	8	23
5365-00-508-4691	12	41	5365-00-752-1575	8	6
5365-00-696-0267	9	19	5365-00-752-1584	8	1
5365-00-664-2779	10	25	5365-00-769-6481	12	61
	11	38	5365-00-769-9003	15	22
5365-00-699-8456	3	6	5365-00-832-7774	10	4
5365-00-699-8457	3	13	5365-00-808-7423	GROUP 0801	
5365-00-699-8459	4	23	9505-00-248-9850	4	17
5365-00-706-1276	12	10		10	12
5365-00-706-1280	12	66		15	13
5365-00-741-3289	14	11			

Part Number Cross Referenced to Figure and Item Number-Continued

Part Number	FSCM	Fig. No.	Item No.	Part Number	FSCM	Fig. No.	Item No.
MS15003-1	96906	11	27	MS90725-33	96906	14	3
		2	36	MS90726-90	96906	4	32
MS15003-7	96906	2	10	MS90726-112	96906	2	33
MS16633-1098	96906	11	38	MS90728-33	96906	14	20
MS17131-35	96906	12	33	MS90728-58	96906	6	19
MS19059-51	96906	12	63	MS90728-84	96906	6	10
MS19059-53	96906	12	62	MS90728-85	96906	8	19
MS19059-55	96906	8	9	MS90728-87	96906	6	2
MS19059-59	96906	14	9			11	6
MS19061-11	96906	4	19			11	22
MS19061-15	96906	12	18			13	4
MS20995-F47	96906	4	17			7	18
		10	12	MS90728-88	96906	6	22
		15	13	MS90728-89	96906	6	6
MS24665-283	96906	14	14			7	18
MS24665-285	96906	12	23	ST202	31007	9	20
MS24665-357	96906	3	21			10	26
		15	2	1KS5021	44731	10	21
MS24665-359	96906	7	15	10872096	19207	1	3
		11	14	10896745	19207	15	16
MS24665-497	96906	12	36	10896746	19207	14	7
MS27183-14	96906	12	12	10896748	19207	11	24
MS27183-16	96906	14	22	10896748	19207	11	32
MS27183-18	96906	14	16	10896749	19207	15	1
MS28775-212	96906	7	5	10896750	19207	14	5
MS29561-12	96906	15	20	10910354	19207	12	25
MS35333-43	96906	13	2	10913209	19207	10	4
MS35335-31	96906	12	26	10924755	19207	8	NI
MS35335-34	96906	11	4	10937790	19207	4	4
MS35335-20	96906	12	52	10937974	19207	4	24
	96906	11	10	10938286	19207	15	3.1
MS35338-47	96906	2	4	10914635	19207	3	3
		4	5	10914636	19207	3	24
		6	3	10914637	19207	3	8
		7	19	10914638	19207	3	26
	96906	11	7	10937391	19207	10	22
		11	47	10937638	19207	10	19
		13	5	10938287	19207	6	23
MS35338-48	96906	2	32	10945186	19207	10	16
MS35648-5	96906	4	27	10948042	19207	10	3
MS35691-21	96906	12	20	10948043	19207	10	8
MS35756-6	96906	15	11	10948080	19207	10	17
MS35756-17	96906	3	16	10948080	19207	10	17
MS35756-18	96906	12	46			9	1
MS35756-105	96906	8	27	10948082	19207	8	25
		9	4	10948099	19207	10	11
		10	18	10948100	19207	10	14
MS35756-109	96906	12	8	10948101	19207	10	20
MS35756-110	96906	3	27	10948103	19207	8	24
MS35769-4	96906	4	9			8	NI
MS39202-6	96906	14	24	10948105	19207	10	24
MS49005-10	96906	2	24	10948106	19207	10	23
MS51915-21-1	96906	4	12	10948108	19207	10	15
MS51922-13	96906	4	10	10948109	19207	7	2
MS51943-44	96906	5	1	11609221	19207	10	7
MS51967-8	96906	11	46	11609224	19207	5	4
MS51968-8	96906	12	34	11609226	19207	5	3
MS51968-11	96906	4	6	11609228	19207	13	6
	96906	11	18	11609328-1	19207	6	5
MS51968-12	96906	13	3			11	21
		11	18	11609328-2	19207	6	24
MS51968-14	96906	11	13			11	20
MS90725-16	96906	10	1	11609558	19207	14	19
MS90725-31	96906	12	11	11621135	19207	14	17
MS90725-32	96906	15	4	11621137	19207	14	21

Part Number Cross Referenced to Figure and Item Number-Continued

Part Number	FSCM	Fig. No.	Item No.	Part Number	FSCM	Fig. No.	Item No.
11621138	19207	14	1	7061268	19207	12	58
11621139	19207	15	17	7061269	19207	12	32
11621140	19207	15	18	7061270	19207	12	59
11621143	19207	15	23	7061271	19207	12	65
11621144	19207	15	12	7061272	19207	12	15
11621145	19207	8	7	7061273	19207	12	4
11621147	19207	6	15	7061274	19207	12	57
11621191	19207	8	28	7061275	19207	12	22
11621193	19207	6	14	7061276	19207	12	10
125947	21450	12	16	7061278	19207	12	13
137251	19207	15	7	7061280	19207	12	66
148346	24617	18	8	7061281	19207	12	21
2135-1	08162	2	1	7064466	19207	11	39
444595	21450	14	5	7064467	19207	11	40
444655	19207	6	28	7064468	19207	11	28
48488	62983	4	26	7064469	19207	11	41
500037	21450	12	49	7064470	19207	11	33
5168861	19207	15	10	7083241	19207	16	5
5143782	19207	8	10	7083247	19207	16	6
5164525	19207	7	6	7083254	19207	16	7
5196397	19207	1	2	713925	21450	8	2
		6	18	7349606	19207	15	15
5186592	19207			7349680	19207	15	21
5186593	19207			7351406	19207	12	24
5214784	19207	12	62	7363016	19207	8	16
5214807	19207	2	3	7363017	19207	8	4
521606	12204	3	33	7368681	19207	11	25
5226033	19207	2	5	7368682	19207	11	31
5226140	19207	12	20	7368683	19207	11	35
5384913	19207	15	19	7371995	19207	9	13
5294103	19207	3	22	7372010	19207	9	12
5323606	19207	12	48	7372011	19207	9	9
5323473	19207	12	27	7372012	19207	9	11
5226128	19207	12	19	7372020	19207	9	16
583509	21450	2	21	7373115	19207	12	9
6143903	19207			7373243	19207	11	34
594119	21450	1	1	7375249	19207	6	25
6156769	19207	14	8	7376534	19207	12	14
6156756	19207	15	6	7397808	19207	11	3
6184279	19207	4	2	7412204	19207	14	26
6262467	19207	12	50	7412211	19207	14	6
7061277	19207	12	67	7413265	19207	14	25
700078	00000	12	68	7413286	19207	14	10
700603	21450	8	5	7413287	19207	15	9
700771	21450	3	9	7413289	19207	14	11
700795	00000	8	17	7520952	19207	2	9
700955	21450	3	2	7520956	19207	2	31
707617	0000	3	37	7520957	19207	2	30
708231	00000	3	33	7520958	19207	2	15
7010362	19207	16	1	7520959	19207	2	7
7010363	19207	16	2	7520965	19207	2	35
712663	00000	9	6	7520966	19207	2	2
		10	21	7520967	19207	2	6
713421	00000	12	5	7520976	19207	2	8
714248	00000	12	47	7520979	19207	2	29
7061136	19207	12	1	7520980	19207	2	34
7061137	19207	12	2	7520987	19207	2	NI
7061159	19207	12	6	7520988	19207	2	16
7061160	19207	12	17	7520989	19207	2	13
7061194	19207	12	60	7520990	19207	2	14
7061210	19207	12	70	7520993	19207	3	1
7061211	19207	12	69	7520994	19207	3	3
7061265	19207	12	39	7520995	19207	1	3
7061266	19207	12	38	7521003	19207	3	23
7061267	19207	12	29	7521004	19207	2	18

Part Number Cross Referenced to Figure and Item Number-Continued

Part Number	FSCM	Fig. No.	Item No.	Part Number	FSCM	Fig. No.	Item No.
7521005	19207	3	14	7521284	19207	11	17
7521006	19207	3	18	7521285	19207	11	28
7521007	19207	2	19	7521340	19207	8	28
7521008	19207	3	6	7521241	19207	9	15
7521009	19207	3	13	7521263-1	19207	6	1
7521010	19207	3	4	7521264	19207	6	20
7521014	19207	11	1	7521272	19207	6	13
7521015	19207	3	8	7521373	19207	8	23
7521016	19207	3	11	7521375	19207	8	29
7521017	19207	3	15	7521376	19207	8	26
7521018	19207	3	9	7521383	19207	8	8
7521019	19207	3	17	7521387	19207	8	11
7521020	19207	3	10	7521390	19207	8	12
7521021	19207	3	20	7521391	19207	9	14
7521022	19207	3	5			10	13
7521023	19207	3	12	7521433	19207	9	19
7521024	19207	3	7			10	25
7521029	19207	3	26	7521434	19207	9	8
7521032	19207	2	28	7521437	19207	10	
7521036	19207	3	30	7521438	19207	8	22
7521038	19207	2	23	7521439	19207	6	7
7521030	19207	3	34	7521441	19207	6	8
7521031	19207	3	24	7521446	19207	6	9
7521032	19207	2	27	7521448	19207	11	37
7521037	19207	3	28	7521487	19207	8	18
7521039	19207	2	25			9	21
7521045	19207	3	35			10	27
7521046	19207	3	25	7521488	19207	11	19
7521047	19207	3	31	7521490	19207	11	2
7521048	19207	2	36	7521573	19207	7	9
7521049	19207	3	32			7	8
7521055	19207	4	31	7521575	19207	8	6
7521056	19207	4	1	7521581	19207	8	14
7521057	19207	4	29	7521583	19207	8	3
7521058	19207	12	56	7521584	19207	8	1
		4	14	7521585	19207	6	11
7521059	19207	4	30	7529383	19207	11	8
7521060	19207	4	15	7538656	19207	12	53
7521061	19207	2	17	7538658	19207	12	55
7521062	19207	4	3	7538660	19207	12	41
7521093	19207	4	20	7538661	19207	12	42
7521094	19207	4	13	7538668	19207	12	37
7521095	19207	4	23	7538671	19207	12	44
7521096	19207	4	21	7538672	19207	12	43
7521097	19207	4	16	7538673	19207	12	45
7521099	19207	4	28	7538674	19207	12	54
7521100	19207	4	18	7538679	19207	12	31
7521101	19207	4	25	7539011	19207	8	15
7521102	19207	11	15	7539023	19207	4	8
		19207	7	7539146	19207	4	7
7521234	19207	7	16	7539169	19207	11	44
7521235	19207	7	17	7539700	19207	12	40
7521237	19207	11	16	7696481	19207	12	61
		6	27	7699003	19207	15	22
7521240	19207	9	3	7700135	19207	7	11
7521241	19207	6	30	7702649	19207	7	7
		7	10	7735601	19207	15	3.2
		10	28	7735641	19207	6	17
7521242	19207	7	13	7748541	19207	2	20
		11	10	7950356	19207	2604	
7521275	19207	6	31	7971286	19207	6	16
7521276	19207	7	12	8327009	19207	10	12
		11	9			12	28
7521277	19207	6	29	8327904	19207	8	20
7521283	19207	11	42	8328007	19207	15	14

Part Number Cross Referenced to Figure and Item Number-Continued

Part Number	FSCM	Fig. No.	Item No.	Part Number	FSCM	Fig. No.	Item No.
8328008	19207	14	13	8743044	19207	12	7
8328010	19207	13	11	8743049	19207	2	22
8328015	19207	14	2			4	11
8329891	19207	9	10	8757599	19207	11	5
8329892	19207	9	17	8757674	19207	7	14
		9	18			11	11
8331791	19207	5	2	8757686	19207	15	3
8344155	19207	12	3	8757704	19207	7	3
8344200-1	19207	6	12	8757705	19207	11	43
		14	4	8757706	19207	11	26
8376462	19207	9	5	8757707	19207	11	30
8380558	19207	11	29	8757709	19207	11	36
8380559	19207	11	23	8757711	19207	11	8
8675959	19207	6	21	8757713	19207	7	4
8380559	19207	11	23	8758292-2	19207	10	5
8675959	19207	6	21	8758294	19207	10	9
8708724	19207	6	4	8758299	19207	10	10
8708279	19207	16	3	878355	19207	12	51
8712073	19207	2	12				

By Order of the Secretary of the Army:

FRED C. WEYAND
General, United States Army
Chief of Staff

Official:

PAUL T. SMITH
Major General, United States Army
The Adjutant General

Distribution:

To be distributed in accordance with DA Form 12-38 (qty rqr block No. 45) Direct and General Support maintenance requirement for 2 1/2 Ton, 6x6, M34; M35A1; A2 and A2C; M36, A2 and A3, M36C.

